



Spotlight on Medi-Cal Managed Care



With more than 13.3 million enrollees, California's Medicaid program (Medi-Cal) provides comprehensive medical, behavioral, and mental health care benefits and services to one in three Californians. The program has experienced tremendous growth since passage of the Affordable Care Act (ACA) - not only in total size but also through the shift to managed care. Overall, Medi-Cal enrollment has grown more than 50 percent since 2013 while the share enrolled in Medi-Cal managed care has increased to 81 percent (roughly 10.9 million members).

Medi-Cal Delivery System Options

\$ FEE-FOR SERVICE

In fee-for-service, no provider coordinates a patient's overall care. Beneficiaries must navigate a list of providers to find physicians and specialists willing to accept Medi-Cal. Medi-Cal fee-for-service pays providers for each service, which results in a financial structure based on quantity of care rather than quality. Beyond reducing provider reimbursements, the state has few mechanisms for controlling costs in fee-for-service. Fee-for-service currently operates to some extent in all 58 counties.

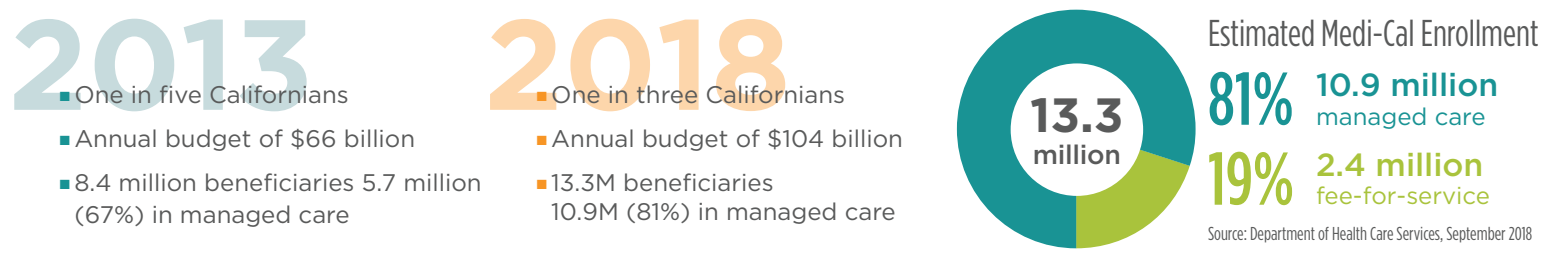
MANAGED CARE

In Medi-Cal Managed Care, beneficiaries' care is coordinated through a primary care physician and a network of hospitals and specialists. Medi-Cal pays the managed care plan a monthly fee for each enrolled member. Because of the fixed payment rates, the state can better control costs and maintain budget predictability in managed care.

Unlike fee-for-service, Medi-Cal Managed Care offers:

- care coordination
- access to providers
- timely access for appointments and services
- language assistance for non-English speakers
- 24-hour information and nurse/advice lines
- coverage for emergencies/urgent care when temporarily out of state

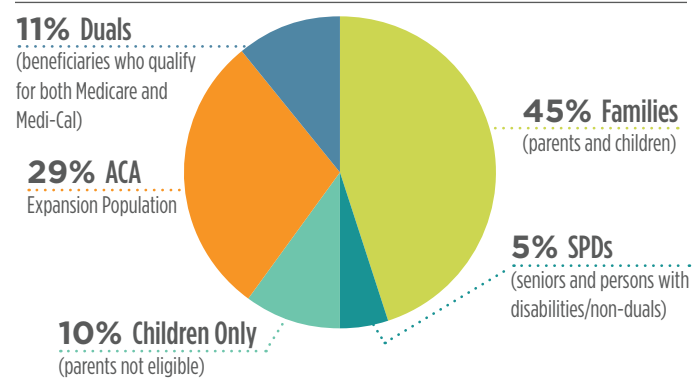
Medi-Cal's Growth at a Glance



INCOME GUIDELINES FOR MEDI-CAL			
Family Size	Adults (138% FPL)	Pregnant Women/ Infants (213% FPL)	Children (266% FPL)
1	\$16,394	\$25,304	\$31,601
2	\$22,108	\$34,123	\$42,613
3	\$27,821	\$42,941	\$53,626
4	\$33,534	\$51,759	\$64,638

Most income guidelines are based on family size and annual household income per the Federal Poverty Limit (FPL). Certain individuals may qualify based on other criteria.
Source: DHCS, Medi-Cal Managed Care Dashboard, September 2016.

ACA Expansion Population Accounts for Nearly One-Third of Medi-Cal Managed Care Enrollment



For more information, please go to www.calhealthplans.org

Medi-Cal Managed Care Oversight

The Department of Health Care Services (DHCS) administers and oversees the Medi-Cal program while the Department of Managed Health Care (DMHC) licenses and regulates most Medi-Cal managed care plans. Managed care is available in all 58 counties including rural areas, and most seniors and persons with disabilities (SPDs) are enrolled in managed care. Counties follow one of several models – county organized health systems, geographic managed care, two-plan, regional, and models specific to Imperial and San Benito counties.

Health Plan Choices by County

COHS		Two-Plan		Regional		GMC					
Del Norte Humboldt Lake Lassen Marin Mendocino Modoc Napa Shasta Siskiyou Solano Sonoma Trinity Yolo	Partnership Health Plan of CA	Alameda	Alameda	Alpine Butte Calaveras Colusa Glenn Inyo Mariposa Mono Nevada Plumas Sierra Sutter Tehama Tuolumne Yuba	Anthem Blue Cross CA Health & Wellness	Sacramento	Aetna* Anthem Blue Cross Health Net Kaiser Molina Healthcare				
			Contra Costa					Contra Costa Health Plan Anthem Blue Cross			
		Fresno Kings Madera	CalViva Health Anthem Blue Cross								
			Kern					Kern Family Health Health Net			
								Los Angeles	LA Care Health Net		
		Merced Monterey Santa Cruz	Central California Alliance for Health			Riverside	Inland Empire Health Plan Molina Healthcare	Amador El Dorado Placer	Anthem Blue Cross CA Health & Wellness	Other Managed Care Options for High-Needs Medi-Cal Enrollees	
						San Bernardino					
		Santa Barbara San Luis Obispo	CenCal			San Francisco	San Francisco Health Plan Anthem Blue Cross	Other Rural Counties		SCAN Health Plan	
						San Joaquin Stanislaus	Health Plan of San Joaquin Health Net	Imperial	Molina Healthcare CA Health & Wellness		
							Santa Clara	Santa Clara Family Health Anthem Blue Cross	San Benito		Anthem Blue Cross
Orange	CalOptima	Tulare	Anthem Blue Cross Health Net			Primary Care Case Management: AIDS Healthcare Foundation (L.A.) Family Mosaic Project (S.F.)					
San Mateo	Health Plan of San Mateo					Programs of All-Inclusive Care for the Elderly (PACE): AltaMed Senior Buena Care Brandman Centers for Senior Care CalOptima • Centers for Elders Independence Fresno PACE • InnovAge PACE On Lok Lifeways • St. Paul's PACE Sutter Senior Care					
Ventura	Gold Coast Health Plan										

Source: Department of Health Care Services

CalDuals

California's Coordinated Care Initiative

Through California's Coordinated Care Initiative, health plans are coordinating the benefits and services for Seniors and Persons with Disabilities (SPDs) and dual eligibles — those who qualify for both Medi-Cal and Medicare — through managed care. Enrollees have access to a full array of providers, supports, and services based on their needs, helping them stay in their homes, manage their medications and chronic conditions, and avoid institutional care. The efficiency created by the CCI pilots results in reduced hospitalizations and ER visits, better patient outcomes, and long-term savings for the state.

Cal MediConnect, the duals demonstration project, serves 111,000 duals across seven counties while the Managed Medi-Cal Long Term Supports and Services (LTSS) component of the CCI integrates home- and community-based services, in-home supports and services (IHSS), and nursing home care into Medi-Cal Managed Care for 1.4 million SPDs and duals.

For more information, please go to www.calhealthplans.org



80%
of enrollees
in Cal MediConnect
are satisfied
with their health plan