



2017 | MEMBERSHIP DIRECTORY



Helping Payers Deliver **COMPLIANT** Pharmacy Programs

Prior Authorization Services

Automated PA System - End-to-End PA Workflow System - Full Service PA Review

- Application-driven processes that document all actions
- Consistent and accurate determinations
- Integrated notification generation with recorded in-mail time
- Extensive and configurable time clock
- Compliant and comprehensive denial rationale
- Live and on-demand reporting, including data for regulatory reporting
- Highly-specialized clinical and customer service review team

Drug Utilization Review Services

Retrospective Drug Utilization Review - MCO Oversight - Lock-In Programs

- Identification of high-risk scenarios
- Clinically-focused procedural expertise
- Educational outreach and provider education
- Comprehensive UM analysis and reporting
- Compliant MCO drug use management oversight



OUR MISSION — Advocating for Health Plans

The mission of CAHP is to serve our member health plans by creating and sustaining an environment that permits them to maintain viability and grow as organizations dedicated to coordinating or providing high quality, affordable and accessible health care to their members.

We do this by:

- » Advocating for the interests of health plans and their members on legislative and regulatory issues
- » Educating policy makers, opinion leaders and regulators on the implications of policy concepts, issues and proposals
- » Promoting collaborative efforts among health plans, providers, purchasers, brokers, other health care associations and other stakeholders to assert policy toward the provision of high quality, affordable and accessible health care
- » Informing the media and the public about our philosophy and the benefits health plans provide
- » Engaging the state's political leaders
- » Promoting opportunities and forums for plan members to meet, exchange ideas and discuss critical issues affecting the industry and industry effectiveness

California Association of Health Plans
1415 L Street, Suite 850
Sacramento, CA 95814
916.552.2910
www.calhealthplans.org

TABLE OF CONTENTS

Letter from the President.....	2
About CAHP	
■ 2016 Conference.....	4
■ 2016 Seminars.....	5
■ CAHP Board of Directors.....	6
■ CAHP Staff.....	7
CAHP Associate, Partner and Health Group Members.....	13
CAHP Health Plan Members.....	35
2017 Plan Enrollment by County.....	36
Health Plan Surveys.....	38



Letter from the President



We are pleased to provide you with the 2017 CAHP Membership Directory. This publication is the source for concise, up-to-date information about each of the health plans in California.

Our members include for-profit, not-for-profit, and public full service licensed Knox-Keene health plans. They serve commercial, Medi-Cal, Medicare, and Covered California consumers.

The directory also highlights CAHP's conference sponsors, Associate and Partner Members, and Health Group Members. All contribute to the success of CAHP in our representation of managed health plans in California.

As the nation works on health care reform, we cannot lose our focus on improving California's Medicaid program and advancing affordability for the over 28 million Californians receiving coverage from CAHP's member plans.

Throughout the year, CAHP hosts a series of issue-based seminars and our annual conference in Huntington Beach. For more information please visit our website at www.calhealthplans.org. You will also find a wide variety of resources and information.

Thank you for your interest in the California Association of Health Plans.

Sincerely,

Charles Bacchi
PRESIDENT & CEO, *California Association of Health Plans*

CAHP IS PROUD TO REPRESENT CALIFORNIA'S HEALTH PLANS, WHICH ENSURE ACCESS TO QUALITY HEALTH CARE FOR OVER 28 MILLION CALIFORNIANS.

- Adventist Health Plan
- Aetna Health of California, Inc.
- AIDS Healthcare Foundation
- Alameda Alliance for Health
- Alignment Health Plan
- AmericasHealth Plan
- Anthem Blue Cross
- Aspire Health Plan
- Blue Shield of California
- California Health & Wellness
- CalOptima
- CalViva Health
- Care1st Health Plan
- CenCal Health
- Central California Alliance for Health
- Central Health Plan of California
- Chinese Community Health Plan
- Cigna Healthcare of California, Inc.
- Community Care Health Plan
- Community Health Group
- Contra Costa Health Plan
- Easy Choice, A Wellcare Company
- Gold Coast Health Plan
- Health Net
- Health Plan of San Joaquin
- Health Plan of San Mateo
- Heritage Provider Network
- Inland Empire Health Plan
- Inter Valley Health Plan
- Kaiser Permanente
- Kern Family Health Care
- L.A. Care Health Plan
- Molina Healthcare of California
- Monarch Health Plan, Inc.
- On Lok Lifeways
- Oscar Health Plan of California
- Partnership HealthPlan of California
- San Francisco Health Plan
- Santa Clara Family Health Plan
- SCAN Health Plan
- Seaside Health Plan
- Sharp Health Plan
- SIMNSA Health Plan
- Sutter Health Plus
- UnitedHealthcare of California
- Valley Health Plan
- Ventura County Health Care Plan
- Western Health Advantage



HYATT REGENCY HUNTINGTON BEACH
October 9-11 | 2017
CAHP ANNUAL CONFERENCE



31ST ANNUAL CONFERENCE

JW MARRIOTT
DESERT SPRINGS
RESORT & SPA

PALM DESERT



OCTOBER 10-12 | 2016

THE 2016 CAHP CONFERENCE brought over 1,100 attendees together in Palm Desert to hear from health care experts on a wide array of important issues for health plans. Attendees were treated to keynote speakers who provided fascinating information on the “Millennial” generation and how they view America as well as the big picture on health care economics.

Attendees heard from Health Plan leaders on the challenges and opportunities facing our health care system in both our Medi-Cal program and in commercial coverage.

The Department of Managed Health Care shared its thoughts on holding health plans accountable for quality, access, and performance.

ATTENDEES WERE TREATED TO KEYNOTE SPEAKERS WHO PROVIDED FASCINATING INFORMATION ON THE “MILLENNIAL” GENERATION AND HOW THEY VIEW AMERICA AS WELL AS THE BIG PICTURE ON HEALTH CARE ECONOMICS.

Covered California’s leadership discussed their continued push for affordable coverage while demanding more from its Qualified Health Plans.

Health plans and stakeholders discussed the IHSS program, efforts to coordinate public coverage through the Cal Mediconnect program, and the changing landscape for Medi-Cal.

Legal experts shared the critical legal issues impacting health plans and coverage and plan Medical Directors talked about important strategies for providing quality health care. Consumers had a chance to share their priorities for improving our health care system.

The program ended with the best breakdown of what happened in health care in the Legislature and why—the Year End Review and Implementation Preview.

FEBRUARY 24 • BURBANK MARRIOTT

Managing the Continuum of Care in Medi-Cal

252 ATTENDEES

SUPPORTED BY:

- Access2Care
- Accenture
- ForaCare
- Genomic Health
- Gilead Sciences
- Healthx
- LexisNexis
- LogistiCare
- Magellan Health Services
- MAGNUS
- Maxim Healthcare Services
- Mirixa Corporation
- ProCare Rx
- The Medicines Company
- TransUnion Healthcare
- VARIS LLC
- Veyo Logistics

APRIL 13 • HYATT REGENCY
SAN FRANCISCO AIRPORT

The Value Proposition in Health Care

86 ATTENDEES

SUPPORTED BY:

- 3M
- Ambry Genetics
- Citra Health Solutions
- Navitus Health Solutions
- Novartis Pharmaceuticals
- The Medicines Company
- ProCare Rx
- ZeOmega

MAY 11 • BURBANK MARRIOTT

Out-of-Network Charges

82 ATTENDEES

SUPPORTED BY:

- MultiPlan
- Myriad Genetics Laboratories
- Premier Healthcare Exchange
- VARIS LLC

JUNE 28 • HILTON BAYFRONT
SAN FRANCISCO AIRPORT

Telehealth in California

91 ATTENDEES

SUPPORTED BY:

- Canary Health
- ForaCare Inc
- Healthx
- LogistiCare Solutions
- Magellan Rx Management
- OnBase by Hyland
- RubiconMD
- Seasons Hospice & Palliative Care
- Weitzman Institute

JULY 31 • BURBANK MARRIOTT

Medi-Cal: Continuing Evolution

164 ATTENDEES

SUPPORTED BY:

- 3M
- AxisPoint Health
- BiologicTx
- Healthx
- Magellan Rx Management
- Navitus Health Solutions
- Optum
- ProCare Rx
- TransUnion
- Valeritas, Inc.



CAHP Board of Directors



Peter Welch | CHAIRMAN OF THE BOARD
CIGNA HealthCare of California, Inc.
President and General Manager



Bradley Gilbert, M.D. | VICE CHAIR
Inland Empire Health Plan
CEO



Wade Overgaard | SECRETARY/TREASURER
Kaiser Permanente Health Plan
Senior Vice President, California Health
Plan Operations



Richard Lee
Aetna Health of California, Inc.
Southern California Market President



Brian Ternan
Anthem Blue Cross
President



Paul Markovich
Blue Shield of California
President & CEO



Michael Schrader
CalOptima
CEO



Steven Sell
Health Net
President



Maya Altman
Health Plan of San Mateo
CEO



John Baackes
L.A. Care Health Plan
CEO



Richard Chambers
Molina Healthcare of California
President



Chris Wing
SCAN Health Plan
President & CEO



Melissa Hayden Cook
Sharp Health Plan
President & CEO



Robert Falkenberg
UnitedHealthcare of California
CEO



Garry Maisel
Western Health Advantage
President & CEO

PAST CHAIRPERSONS

Garry Maisel	2015–2016
Paul Markovich	2013–2014
Jerry Fleming	2011–2012
Howard Kahn	2009–2010
Curtis Terry	2007–2008
David Helwig	2005–2006
Ken Wood	2002–2005
Mark G. Hyde	2001–2002
Ron Williams	2000–2001
Bruce Bodaken	1998–2000
Arthur M. Southam, M.D.	1995–1998
Kathleen Swenson	1994–1995
R. Judd Jessup	1992–1994
Stuart Byer	1987–1992
Anthony Pescetti	1985–1987
Maree Church	1983–1985

CAHP Staff



Charles Bacchi
President & CEO



Marjorie King
Meeting and Events Manager



Nick Louizos
Vice President, Legislative Affairs



Connie Flores
Administrative Services Manager



Athena Chapman
Vice President, State Programs



Elizabeth Evenson
State Programs Analyst



Wendy Soe
Director, Regulatory Affairs



Greg Hyatt
Policy and Communications Analyst



Jennifer Alley
Legislative Advocate



Olga Shilo
Legislative Assistant



Geri O'Neil
Business Development Manager



GET CONNECTED

Interconnected Health

Continuum of Care

Consumer Engagement

Payer Provider Network



TRUE METRIX® AIR* Is Technology With Reach

With integrated wireless capability, results are seamlessly delivered to your mobile device** to provide simple tracking and insights, empowering you and your healthcare provider to make better decisions for a healthier life.

Featuring  **TRIPLE SENSE
TECHNOLOGY**®

Go to www.trividiahealth.com for more information.



NICO-3500 © 02/16 Trividia Health, Inc. TRUE METRIX, TRIPLE SENSE TECHNOLOGY and the Trividia Health logo are trademarks of Trividia Health, Inc. * TRUE METRIX AIR is intended for self-monitoring blood glucose only and not for multiple patient use. Only TRUE METRIX PRO is intended for multiple patient use.

**Go to www.trividiahealth.com/truemanagerair for a list of compatible mobile devices and applications.

TRUE METRIX® AIR

For more information please contact:

Karen Jackson

kjackson@trividiahealth.com

mobile - 415.672.0363

**TRUE
METRIX**
AIR

SELF MONITORING BLOOD GLUCOSE METER

*Better **Service.**
Better **Performance.***



*Experience **Zelis Healthcare.***



Zelis Healthcare is a healthcare information technology company that provides solutions which address pre-payment to payment needs across the claims life cycle.

*Find out what **Fully Integrated Healthcare Cost Management** can do for you!*

Visit us at Zelis.com





BANC OF CALIFORNIA

MAKING *COMMUNITIES* CALIFORNIA STRONG.



CALIFORNIA'S PREMIER REGIONAL BANK

Banc of California is committed to empowering California through its diverse businesses, entrepreneurs and communities. As the largest independent bank in California with an Outstanding CRA Rating for Community Development, Banc of California has been recognized by community groups such as the California Reinvestment Coalition as the “Gold Standard” for community activities.

At Banc of California, we are committed to serving the California Health Plans and help to fulfill your mission to serve your members. Banc of California has a dedicated healthcare banking team that is knowledgeable about the industry and the unique needs of health plans and the healthcare industry.

TOGETHER WE MAKE CALIFORNIA STRONG.

Kathleen Brownell, SVP, Senior Director,
Relationship Development Manager, Health Care
Segment Cell: 949-560-7195
Kathleen.Brownell@bancofcal.com



ASSOCIATE, PARTNER AND HEALTH GROUP MEMBERS

Want to improve your medication adherence rates?



Mirixa, the leading provider of medication therapy management (MTM) and targeted, pharmacist-delivered programs to health plans and PBMs, harnesses the knowledge and skills of pharmacists to engage more patients and deliver measurable results.

- + **Star Ratings**
- + **Adherence**
- + **Care Gaps**
- + **Formulary Alignment**
- + **Disease-Specific Medication Management**

For more information...

Eric E. Hoessel
Vice President Sales
ehoessel@mirixa.com
Phone: 703-865-2006

MIRIXA[®]
The Power of Pharmacy[®]

Associate Members

340B Exchange

Managed Care

Tom Mackintire

VP of Managed Care

219 East Houston Street #200

San Antonio, TX 78205

P (210) 668-1804

tmackintire@340BX.com

www.340BExchange.com

3M Health Information Systems

Billing/Claims Processing and IT/Software

David Wetherelt

Director, Business Development

125 Defreest Avenue

Troy, NY 12180

P (651) 261-2878

dwetherelt@mmm.com

www.3mhis.com

ABG Communications

Member Communications

Joel Luce

CEO

3810 Wabash Drive

Mira Loma, CA 91752

P (951) 361-7326

F (951) 685-0350

joel.luce@abg-communications.com

www.abg-communications.com

Acorda Therapeutics, Inc.

Biotech Manufacturer

Stephanie Roberts

Senior Account Director, West Region

420 Saw Mill River Road

Ardsley, New York 10502

P (520) 241-8559

F (520) 546-7679

sroberts@acorda.com

www.acorda.com

Amber Pharmacy

Specialty Pharmacy

Jo Ann Hyres

Senior VP, Sales & Marketing

10004 South 152nd Street

Omaha, NE 68138

P (888) 370-1724 ext 1032

jhyres@amberpharmacy.com

www.amberpharmacy.com

Amgen

Biotechnology

Joe Gelinis

Corporate Account Manager

1822 Calle Borrego

Thousand Oaks, CA 91360

P (805) 313-8135

F (805) 435-8174

jgelinas@amgen.com

www.amgen.com

Arch Health Partners

Physician Group

Deanna Kyrimis

CEO

15611 Pomerado Road #400

Poway, CA 92064

P (858) 673-2521

F (858) 487-4736

deanna.kyrimis@archhealth.org

www.archhealth.org

ARIAD Pharmaceuticals, Inc.

Biotech

Heather Hays

Corporate Account Director, US Payors

26 Landsdowne Street

Cambridge, MA 02139

C (949) 444-8605

Heather.Hays@ariad.com

www.ariad.com

ArkrayUSA, Inc.

Medical Supplies

Robert Wernsman

VP Consumer Health Division

5198 West 76th Street

Edina, MN 55439

P (210) 473-1919

wernsmanr@arkrayusa.com

www.arkrayusa.com

Availity, LLC

Health Information Network

Christian Westerman

Regional VP, Business Development

10752 Deerwood Park Blvd South, Suite 110

Jacksonville, FL 32256

C (480) 399-8822

F (904) 470-4778

christian.westerman@availity.com

www.availity.com

Associate Members

Avanir Pharmaceuticals

Pharmaceutical Manufacturer

Phillip Santa Maria, MBA

Account Executive

30 Enterprise, Suite 400

Aliso Viejo, CA 92656

P (714) 280-0131

F (949) 362-6264

psantamaria@avanir.com

www.avanir.com

Banc of California

Financial Services

Cynthia Reeves

SVP Healthcare Banking & Financial Services

18300 Von Karman Avenue, Suite 850

Irvine, CA 92612

P (949) 236-5390

F (949) 272-6014

cynthia.reeves@bancofcal.com

www.bancofcal.com

Bayer HealthCare LLC

Pharmaceutical

Danielle Addis

Regional Account Manager

Bryan Bradford

Regional Account Manager

100 Bayer Boulevard, PO Box 915

Whippany, NJ 07981

P (626) 893-3411

danielle.addis@bayer.com

bryan.bradford@bayer.com

www.bayer.com

BluePeak Advisors

Consultant

Sherry Pound

Principal

2652 FM 407, Suite 215

Bartonville, TX 76226

P (808) 478-3975

spound@bluepeak.com

www.bluepeak.com

Bristol Myers Squibb Company

Pharmaceutical

Jennifer Denning

Account Executive

1420 Arbor Lane

Alamo, CA 94507

P (415) 999-3512

jennifer.denning@bms.com

www.bms.com

Cal INDEX

Health Information Exchange

Doug Hart

VP Marketing & Business Development

6001 Shellmound Street #500

Emeryville, CA 94608

P (510) 683-1312

doug.hart@calindex.org

www.calindex.org

Calibrated Healthcare Network LLC

Business Process Outsourcing

Jovita Montes De Oca

CEO

1601 Monte Vista Ave., Suite 250

Claremont, CA 91711

P (866) 955-0044

F (909) 256-8903

jovita@calibratedhealthcare.com

www.calibratedhealthcare.com

CalPACE

Association

Peter Hansel

Chief Executive Officer

1315 I Street, Suite 100

Sacramento, CA 95814

P (916) 469-3368

F (916) 428-4250

phansel@calpace.org

www.calpace.org

CAPG, The Voice of Accountable Physician Groups

Physician Organization Trade Association

Donald H. Crane

President & CEO

915 Wilshire Blvd., Suite 1620

Los Angeles, CA 90017

P (213) 624-CAPG (2274)

F (213) 683-0032

dcrane@capg.org

www.capg.org

CAQH

Healthcare Technology & IT Software

Jyoti Jalali

Senior Manager, Business Development

1900 K Street NW, Suite 650

Washington, DC 20006

P (615) 773-4000

F (202) 517-0397

jjalali@caqh.org

www.caqh.org

Associate Members

Casenet

IT/Software

Martin Hand

VP, Regional Sales

36 Crosby Drive
Bedford, MA 01730

P (781) 357-2700

F (781) 357-2701

mhand@casenetllc.com

www.casenetllc.com

Celgene Corporation

Biopharmaceutical

Michael Foster

Market Access Executive

7325 Arcadia Drive
Huntington Beach, CA 92648

C (562) 754-7604

F (714) 596-3473

mfoster@celgene.com

www.celgene.com

CHOICE Administrators

Small Group Private Exchanges

David Duker

Chief Strategic Officer

CHOICE Administrators

P (714) 567-4587

dduker@choiceadmin.com

www.choiceadministrators.com

City National Bank

Financial & Commercial Banking

Lesley Mattos

Senior Relationship Manager

150 California Street, 12th Floor
San Francisco, CA 94111

P (415) 576-2536

C (650) 619-5851

kathleen.brownell@cnb.com

www.cnb.com

Diplomat Specialty Pharmacy

Specialty Pharmacy

Nancy Kistler

Director, Payor Strategies

4100 S. Saginaw Street
Flint, MI 48507

P (760) 604-1857

F (877) 334-1347

nkistler@diplomat.is

www.diplomat.is

DST Health Solutions, LLC

Health Outcomes Optimization

Kristy Cayot

Marketing Manager

1300 Washington Street
Kansas City, MO 64105

P (816) 843-5832

F (816) 843-6415

klcayot@argushealth.com

www.argushealth.com

Eisai Inc

Pharmaceutical Company

Olaf Reinwald

Regional Account Manager

8969 Covey Court
Elk Grove, CA 95624

P (916) 417-9580

olaf_reinwald@eisai.com

www.eisai.com

EnvisionRx

Pharmacy Benefit Management

Josh Paulen, MBA

Marketing Strategies Executive

2181 East Aurora Road
Twinsburg, OH 44087

P (954) 767-2645

jpaulen@envisionrx.com

www.envisionrx.com

Envolve, Inc.

Health Management Services,
Telemedicine, Healthcare Technology,
Pharmacy Benefit Management

Jennifer Bonham

Director, Marketing & Sales

7700 Forsyth Blvd.
Clayton, MO 63105

P (844) 331-6034

info@envolvehealth.com

www.envolvehealth.com

Essette, Inc.

IT/Software

Marc Lawrence

SVP Business Development

636 Coffman Street, Suite 300
Longmont, CO 80501

P (800) 403-8220 ext 134

P (303) 500-6933

info@essette.com

www.essette.com

Associate Members

eviCore healthcare

Medical Benefits Management

Maureen Collins

VP, Client Relationship Management

400 Buckwalter Place Blvd

Bluffton, SC 29910

P (843) 706-1686

mecollins@evicore.com

www.evicore.com

Excelsior Solutions

Pharmacy Consulting

Ken Dowell

Executive Vice President

7650 Edinborough Way, Suite 100

Edina, MN 55435

P (952) 562-5540

F (952) 737-5440

kdowell@excelsiorsolutions.com

www.excelsiorsolutions.com

Exelixis

Biopharmaceutical

Mike McDole, MBA

Senior National Account Director

210 East Grand Avenue

South San Francisco, CA 94080

C (303) 548-8949

mmcdole@exelixis.com

www.exelixis.com

FlexTech, Inc.

IT Consulting & Services

Alexei Beran

Director, Strategic Accounts

445 Butternut Drive

Holland, MI 49424

P (616) 392-9726

C (714) 552-1802

aberan@flextech.com

www.flextech.com

Freed Associates

Management Consulting Services

Brad Loose

Client Solutions Leader

412 Yale

Kensington, CA 94708

P (650) 292-0881

F (510) 525-6453

bhl@freedassociates.com

www.freedassociates.com

Genomic Health Inc.

Diagnostics-Oncology

Jim Koehler

Managed Markets

301 Penobscot Drive

Redwood City, CA 94063

P (805) 279-8969

F (805) 758-6841

jkoehler@genomichealth.com

www.genomichealth.com

Health Information Designs

Billing/Claims, BPO, Health Management, IT

Chris Rofidal

Regional Sales Director

391 Industry Drive

Auburn, AL 36832

P (334) 466-3031

F (888) 419-1312

chris.rofidal@hidesigns.com

www.hidesigns.com

HealthCare Scouts, Inc.

Staffing/Recruiting

Bill Morgan

President

2699 Lee Road, #430

Winter Park, FL 32789

P (800) 708-0605

info@healthcarescouts.com

www.healthcarescouts.com

HealthEdge

IT/Software and Billing/Claims Processing

Chris Conte

Executive Vice President, Sales

30 Corporate Drive

Burlington, MA 01803

P (781) 285-1300

F (781) 419-6183

info@healthedge.com

www.healthedge.com

HealthPlan Services

Health Management Services & IT

Jennifer Needle

Senior Account Manager

3501 East Frontage Road

Tampa, FL 33607

P (813) 289-1000 ext 7003242

jneedle@healthplan.com

www.healthplan.com

Associate Members

Healthx, Inc.

Software (Portal Development)

Chuck Rolfsen

Chief Revenue Officer

9339 Priority Way, West Dr., Suite 150

Indianapolis, IN 46240

P (877) 492-3633

crofsen@healthx.com

www.healthx.com

HMS

Claims Processing

Carrie Cunningham

Vice President, Business Development

401 Park Avenue South

New York, NY 10016

P (916) 405-6780

ccunningham@hms.com

www.hms.com

Independent Living Systems

Billing/Claims, BPO, Health Management, IT

April Cole

VP of Sales

550 North Brand Blvd, Suite 1800

Glendale, CA 91203

P (818) 798-4761

acole@ilshealth.com

www.ilshealth.com

Indivior

Specialty Pharmacy

Georgette Dzwilewski

Strategic Account Manager

5575 Ladybird Lane

La Jolla, CA 92037

P (858) 220-5044

F (858) 459-8360

georgette.dzwilewski@indivior.com

www.indivior.com

Intercept Pharmaceuticals

Pharmaceuticals

Curtis Sianchuk

Director, Strategic Accounts

PO Box 549

Fall City, WA 98024

P (425) 894-5578

curtis.sianchuk@interceptpharma.com

www.interceptpharma.com

Kindred Healthcare

Hospital

Jeanette Lee

Senior Director, Managed Care

200 Hospital Circle

Westminster, CA 92683

P (714) 474-9222

F (855) 266-2884

jeanette.lee@kindred.com

www.kindredhealthcare.com

KP LLC

Member Communications

Brett Olszewski

Chief Sales & Marketing Officer

13951 Washington Avenue

San Leandro, CA 94578

P (408) 230-2058

F (510) 351-2555

bolszewski@kpcorp.com

www.kpcorp.com

LexisNexis Risk Solutions

Fraud Protection, Compliance Data Services

Mark Bradley

Health Care Executive

1000 Alderman Drive

Alpharetta, GA 30005

P (267) 424-9645

mark.bradley@lexisnexis.com

www.lexisnexis.com/risk/healthcare.aspx

Lilly USA, LLC

Pharmaceutical Company

Helen P. Liao

Market Manager

Lilly Corporate Center

Indianapolis, IN 46285

P (925) 577-0511

hpliao@lilly.com

www.lilly.com

LogistiCare

Care Coordination Solutions &

Transportation Benefit Management

Jody Gonzalez

General Manager

7441 Lincoln Way, Suite 200

Garden Grove, CA 92841

P (877) 917-8166

jody.gonzalez@logisticare.com

www.logisticare.com

Associate Members

MCG Health

Informed Care Strategies

Richard Miller

Regional Sales Director

901 Fifth Avenue, Suite 2000

Seattle, WA 98164

P (303) 660-0061

P (888) 464-4746

richard.miller@mcg.com

www.mcg.com

MedHOK, Inc.

IT/Software

Michelle Frank

Chief Growth Officer

5550 W Idlewild Ave, Suite 150

Tampa, FL 33624

P (813) 304-2800

F (888) 910-7764

mfrank@medhok.com

www.medhok.com

MedImpact Healthcare Systems, Inc.

Pharmacy Benefit Management

Dana Felthouse

Vice President Business Development

10181 Scripps Gateway Court

San Diego, CA 92131

P (858) 790-6684

dana.felthouse@medimpact.com

www.medimpact.com

Medline Industries & Continenence Care

Medical Supplies

Jake Mead

VP Payer Solutions

1 Medline Place

Mundelein, IL 60060

P (310) 780-5038

F (866) 726-9865

jmead@medline.com

www.medline.com

Merrimack Pharmaceuticals

Pharmaceuticals

Paul Sparks

Director National Accounts

One Kendall Square

Cambridge MA 02139

P (512) 667-5031

psparks@merrimack.com

www.merrimack.com

Milliman (MedInsight)

Analytics & Business Intelligence Software

Todd Fessler

Principal

1301 Fifth Avenue, Suite 3800

Seattle, WA 98101

P (206) 504-5516

F (206) 447-6909

todd.fessler@milliman.com

www.medinsight.milliman.com

Mirixa Corporation

Medication Therapy Management

Eric Hoessel

VP Sales

11600 Sunrise Valley Drive, Suite 100

Reston, VA 20191

P (703) 865-2006

ehoessel@mirixa.com

www.mirixa.com

Moss Adams LLP

Accounting and Consulting

Chris Pritchard

Health Care Practice Leader

999 3rd Street Ave #2800

Seattle, WA 98104

P (415) 677-8262

F (415) 956-4149

chris.pritchard@mossadams.com

www.mossadams.com

Munich Health North America

Healthcare Reinsurer

Michael Shevlin

Senior Vice President

555 College Road East

Princeton, NJ, 08543

P (609) 577-2610

F (609) 951-8464

mshevlin@munichhealth.com

www.munichhealthNARE.com

Navitus Health Solutions

Pharmacy Benefit Management

Byron Mickle

Senior VP, Sales & Marketing

2601 West Beltline Highway, Suite 600

Madison, WI 53713

P (512) 231-3150

byron.mickle@navitus.com

www.navitus.com

Associate Members

Novartis Oncology

Pharmaceutical

Mark Pledger

Sr Regional Account Manager — Oncology

One Health Plaza

East Hanover, NJ 07936-1080

P (503) 348-6111

mark.pledger@novartis.com

www.novartis.com

Novo Nordisk, Inc.

Pharmaceutical Company

Sheree Paloutzian

West Director of Managed Markets

22481 Marquam Hill Road

Bella Vista, CA 96008

P (530) 515-9331

F (530) 515-9331

sepz@novonordisk.com

www.novonordisk-us.com

NTT Data, Inc.

IT/Software

Paul Weisz

Senior Sales Executive

5601 Granite Parkway, Suite 1000

Plano, TX 75024

P (972) 618-2149

paul.weisz@nttdata.com

www.nttdata.com/americas

Omada Health

Digital Health

Scott Honken

VP, Health Plans & Systems

500 Sansome Street #200

San Francisco, CA 94111

P (888) 987-8337

scott.honken@omadahealth.com

www.omadahealth.com

Optimity Advisors

Billing/Claims, BPO, PBM

Doris Stein

Partner

1100 Glendon Ave, Suite 925

Los Angeles, CA 90024

P (310) 954-2980

F (202) 540-9223

doris.stein@optimityadvisors.com

www.optimityadvisors.com

Optum

Healthcare Technology,
Management & Services

Eric Murphy

Enterprise Growth Officer

11000 Optum Circle

Eden Prairie, MN 55344

P (800) 765-6807

empower@optum.com

www.optum.com

PCG Software, Inc.

IT/Software

Michael Lubao

CEO

7065 W Ann Rd, Suite 130-549

Las Vegas, NV 89130

P (877) 789-1291 ext 205

F (702) 778-2064

mlubao@pcgsoftware.com

www.pcgsoftware.com

PerformRx and PerformSpecialty

PBM and Specialty Pharmacy

John Butts

Director, Marketing and Public/Client Relations

200 Stevens Drive, 4th Floor

Philadelphia, PA 19113

P (215) 937-8073

F (215) 863-5100

jbutts@performrx.com

www.performrx.com

www.performspecialty.com

Premier Healthcare Exchange

Billing/Claims, Healthcare Technology
& Health Management

Clara Pachomski

Executive Assistant

2 Crossroads Drive

Bedminster, NJ 07921

P (888) 311-3505

F (908) 658-3511

cpachomski@phx-online.com

www.phx-online.com

Associate Members

ProCare Rx

Pharmacy Benefit Management

Scott Burns

Vice President of Sales

1267 Professional Parkway

Gainesville, GA 30507

P (678) 248-3101

sburns@procarerx.com

www.procarerx.com

Ramat Medical

Durable Medical Equipment, Rentals, Supplies,
Nurse Consulting, Furniture & Case Goods

Denise Wilson

Chief Operating Officer

5812 West Pico Boulevard

Los Angeles, CA 90019

P (877) 726-2863

F (323) 938-2458

luisl@ramatmed.com

www.ramatmed.com

Relypsa, Inc.

Biopharmaceuticals

Mitchell Beavers

Regional Account Manager

100 Cardinal Way

Redwood City, CA 94063

P (650) 421-9500

mbeavers@relypsa.com

www.relypsa.com

Risk Strategies Company (Dubraski & Associates and Re-Solutions)

Reinsurance Intermediaries

Chuck Newton

Senior Vice President

10 South 5th Street, Suite 1108

Minneapolis, MN 55402

P (804) 647-8360

cnewton@re-solutions.net

www.risk-strategies.com/healthcare

Teladoc

Telehealth

Theresa Nute

Area VP Health Plan Markets

1945 Lakepointe Drive

Lewisville, TX 75057

P (425) 351-0935

tnute@teladoc.com

www.teladoc.com

The Compliance Team

Accreditation Organization

Sandra C. Canally, RN

President

PO Box 160

Spring House, PA 19477

P (215) 654-9110

F (215) 654-9068

info@thecomplianceteam.org

www.TheComplianceTeam.org

Time Warner Cable Business Class

IT/Telecommunications

Charles McLaurin

Major Account Executive

17777 N Center Court Drive, 8th Floor

Cerritos, CA 90703

P (310) 863-9452

F (704) 414-9088

charles.mclaurin@twcable.com

www.business.twc.com

TMG Health, Inc.

Business Process Outsourcing (BPO)

J. Teig Boyle

Vice President, Sales & Marketing

100 Four Falls Corporate Center, Suite 406

Conshohocken, PA 19428

P (610) 878-9111, ext 21223

F (610) 878-5525

ProfessionalSolutions@tmghealth.com

www.tmghealth.com

Associate Members

UCB, Inc.

Pharmaceutical

Randall Ermert

Regional Account Executive

1950 Lake Park Drive SE

Smyrna, GA 30080

P (770) 970-7500

F (770) 970-8859

randall.ermert@ucb.com

www.ucb.com

Vertex Pharmaceuticals Inc.

Global Biotechnology Company

Gregg Rasmussen

Director, Payer & Trade Accounts

50 Northern Avenue

Boston, MA 02210

gregg_rasmussen@vrtx.com

www.vrtx.com

Veyo

Transportation Benefit Services

James Rea

National Business Development Manager

750 B Street, Suite 1450

San Diego, CA 92101

P (855) 588-0880

jrea@veyo.com

www.veyo.com

Windsor Healthcare

Skilled Nursing

Linda M. Moore

Senior Director Managed Care

9200 Sunset Boulevard, 7th Floor

West Hollywood, CA 90069

P (310) 385-1009

F (310) 595-3790

lmoore@snfmgt.com

www.snfmgt.com

Zelis Healthcare

Billing/Claims, Health Management, Technology

Bryan Russo

SVP, Director of Sales

2 Crossroads Drive

Bedminster, NJ 07921

P (888) 311-3505

F (908) 658-3511

bryan.russo@zelis.com

www.zelis.com

ZeOmega, Inc.

IT/Software

Kerry Winkle

Regional VP of Sales

6200 Tennyson Parkway, Suite 200

Plano, TX 75024

P (214) 618-9880

kwinkle@zeomega.com

www.zeomega.com

Accounting

Moss Adams LLP

Accreditation

The Compliance Team

Analytics

Health Information Designs

Milliman MedInsight

Optum

Ancillary Private Exchanges

CHOICE Administrators

Associations/Organizations

Cal INDEX

CalPACE

CAPG, The Voice of Accountable
Physician Groups

Billing/Claims Processing

3M Health Information Systems

DST Health

HMS

Optimity Advisors

Optum

Pay-Plus Solutions, Inc.

Premier Healthcare Exchange

Biotechnology

ARIAD Pharmaceuticals, Inc.

Vertex Pharmaceuticals, Inc.

**Business Process
Outsourcing (BPO)**

Calibrated Healthcare
Network LLC

DST Health

Optum

TMG Health, Inc.

Consulting

Blue Peak Advisors

DST Health

Excelsior Solutions, LLC

FlexTech, Inc.

Freed Associates

Moss Adams LLP

Optimity Advisors

Optum

Continence Care

Medline Industries

Diagnostics – Oncology

Genomic Health

Financial Services

Banc of California

City National Bank

Optum

Fraud Detection

LexisNexis

Omada Health

**Health Information
Exchange**

Cal INDEX

**Health Management
Services**

Envolve, Inc.

Health Information Designs

HealthPlan Services

Independent Living Systems

Optum

Premier Healthcare Exchange

Healthcare Reinsurer

Munich Health North America

Risk Strategies Company
(Dubraski & Associates
and Re-Solutions)

Healthcare Technology

CAQH

DST Health

Envolve, Inc.

MCG Health

Optimity Advisors

Optum

Premier Healthcare Exchange

Risk Strategies Company
(Dubraski & Associates
and Re-Solutions)

Hospitals

Kindred Healthcare

Informed Care Strategies

MCG Health

IT/Software

3M Health Information Systems

Availity, LLC

CAQH

Casenet

DST Health

Essette, Inc.

FlexTech, Inc.

HealthPlan Services

Healthx, Inc.

MCG Health

MedHOK

Milliman MedInsight

NaviNet

NTT Data

Optum

PCG Software

Time Warner Cable
Business Class

Managed Care

340B Exchange

Medical Benefits Management

eviCore healthcare

Medical Equipment

Ramat Medical

Medical Supplies

Arkray USA, Inc.
Medline Industries, Inc.

Medication Therapy Management

Mirixa Corporation

Member Communications

ABG Communications
KP LLC

Nutritional Support Services

Independent Living Systems

Pharmaceutical

Acorda Therapeutics, Inc.
Amgen
ARIAD Pharmaceuticals Inc.
Avanir Pharmaceuticals Inc.
Bristol-Myers Squibb
Celgene Corporation
Eisai Inc
Lilly USA
Novartis
Novo Nordisk, Inc.
Relypsa, Inc.
UCB, Inc.

Pharmacy Benefit Management (PBM)

EnvisionRx
MedImpact Healthcare Systems, Inc.
Navitus Health Solutions
Optimity Advisors
Optum
PerformRx & Perform Specialty
ProCare Rx

Reinsurance Intermediaries

Risk Strategies Company
(Dubraski & Associates and Re-Solutions)

Risk Adjustment

Optum

Skilled Nursing

Windsor Healthcare

Small Group Private Exchanges

CHOICE Administrators

Specialty Pharmacy

Amber Pharmacy
ARIAD Pharmaceuticals, Inc.
Diplomat Specialty Pharmacy
Exelixis
Envolve, Inc.
HealthPlan Services
Indivior
Intercept Pharmaceuticals
PerformRx and PerformSpecialty

Staffing/Recruiting

HealthCare Scouts, Inc.

Telecommunications

Time Warner Cable Business Class

Telehealth

Teladoc

Telemedicine

Envolve, Inc.

Transportation Benefit Services

LogistiCare Solutions
Veyo

Utilization Management

Envolve, Inc.

A photograph of the California State Capitol building in Sacramento, featuring its iconic dome and classical columns under a blue sky with light clouds.

REPRESENTING California's Health Plans

- Provider Litigation
- Regulatory Enforcement
- Medi-Cal Litigation & Advice
- Contract Review & Drafting
- Licensing & Compliance



**DAPONDE
SZABO
ROWE**

HEALTH CARE LAW

500 Capitol Mall, Suite 2260 • Sacramento, CA 95814

Phone: 916.840.5600 • Fax: 916.840.5599

www.dsrhealthlaw.com

Partner Members

Crowell & Moring LLP

William A. Helvestine
Partner

Andrew Hefty
Partner

Gary Baldwin
Counsel

275 Battery Street, 23rd Floor
San Francisco, CA 94111
P (415) 986-2800
P (415) 365-7261
P (415) 365-7850
F (415) 986-2827
whelvestine@crowell.com
ahefty@crowell.com
gbaldwin@crowell.com
www.crowell.com

Daponde Szabo Rowe PC

Michael Daponde Shareholder/President
mdaponde@dsrhealthlaw.com

Troy Szabo
Shareholder
tszabo@dsrhealthlaw.com

Megan Rowe
Shareholder
mrowe@dsrhealthlaw.com

Eunice Majam-Simpson
Partner
emajam-simpson@dsrhealthlaw.com
500 Capitol Mall, Suite 2260
Sacramento, CA 95814
P (916) 840-5660
F (916) 840-5599
www.dsrhealthlaw.com

Katrina Peltó Consulting

Katrina Peltó
Consultant
8172 Bushwick Drive
Huntington Beach, CA 92646
P (714) 536-6799
F (714) 960-3260
kpelto@socal.rr.com

Kennaday Leavitt Owensby PC

Curtis Leavitt
Partner

621 Capitol Mall, 25th Floor
Sacramento, CA 95814
P (916) 732-3073
cleavitt@kennadayleavitt.com
www.kennadayleavitt.com

Law Offices of Jinny R. Yang

Jinny Yang
Attorney
P.O. Box 8239
Northridge, CA 91327
P (310) 701-9106
jylaw@jinnyyang.com
www.JinnyYang.com

Law Office of Michael Zablocki

Michael Zablocki
Attorney
21250 Hawthorne Boulevard, Suite 500
Torrance, California 90503
P (310) 316-0968
mzablocki@socal.rr.com

Locke Lord LLP

Denise Hanna
Partner
701 8th Street, NW Suite 700
Washington, DC 20001
P (202) 220-6992
F (202) 220-6945
dhanna@lockelord.com
www.lockelord.com

Manatt, Phelps & Phillips, LLP

John LeBlanc
Partner
11355 West Olympic Boulevard
Los Angeles, CA 90064
P (310) 312-4000
F (310) 312-4224
jleblanc@manatt.com
www.manatt.com

Partner Members

Manatt, Phelps & Phillips, LLP

Carri Maas
Partner

One Embarcadero Center, 30th
Floor
San Francisco, CA 94111
P (415) 291-7459
F (415) 291-7510
cmaas@manatt.com
www.manatt.com

Manatt, Phelps & Phillips, LLP

Thomas McMorrow
Partner

1215 K Street, Suite 1900
Sacramento, CA 95814
P (916) 552-2310
P (916) 552-2323
tmcorrow@manatt.com
www.manatt.com

Nossaman LLP

Morgan Muir Callahan
Attorney

50 California Street, 34th Floor
San Francisco, CA 94111
P (415) 398-3600
F (415) 398-2438
mcallahan@nossaman.com
www.nossaman.com

Nossaman LLP

Richard Spohn
Partner

50 California Street, 34th Floor
San Francisco, CA 94111
P (415) 398-3600
F (415) 398-2438
rspohn@nossaman.com
www.nossaman.com

Nossaman LLP

Mary Antoine
Partner

621 Capitol Mall, 25th Floor
Sacramento, CA 95814
P (916) 442-8888
F (916) 442-0382
mantoine@nossaman.com
www.nossaman.com



Health Group Members

Beacon Health Options

Julia F. Bernstein
VP, Strategy & Development — West Region
1999 Harrison Street, Suite 675
Oakland, CA 94612
P (510) 771-0754
julia.bernstein@beaconhealthoptions.com
www.beaconhealthoptions.com

Davita HealthCare Partners Plan

Jim Rehtin
President/CEO
2175 Park Place
El Segundo, CA 90245
P (303) 876-6100
F (866) 281-0766
jim.rehtin@davita.com
www.healthcarepartners.com

Delta Dental of California

Jeff Album
Vice President, Public and Government Affairs
100 First Street
San Francisco, CA 94105
P (415) 972-8418
F (415) 227-0972
jalbum@delta.org
www.deltadentalins.com

DentaQuest

Brian Watts
Sales Director, Western Region
23291 Mill Creek Drive #100
Laguna Hills, CA 92653
P (619) 884-4470
Brian.Watts@dentaquest.com
www.dentaquest.com

FirstSight Vision Services

Robert K. Patton
President & CEO
1202 Monte Vista Ave., Suite #17
Upland, CA 91786
P (909) 920-5008
F (626) 609-2391
Robert.Patton@firstsightvision.net
www.firstsightvision.net

LIBERTY Dental Plan of California

Dave Meadows
SVP Government Programs
340 Commerce, Suite 100
Irvine, CA 92602
P (949) 933-5327
F (949) 825-8216
dmeadows@libertydentalplan.com
www.libertydentalplan.com

Magellan Healthcare

Richard T. Clarke, Ph.D
CEO, California Market
93131 Camino Del Rio North, Suite 400
San Diego, CA 92108
P (619) 326-9450
F (888) 656-1922
rclarke@magellanhealth.com
www.magellanhealth.com

Medical Eye Services, Inc. (MESVision)

Aspasia Shappet
President & CEO
345 Baker Street
Costa Mesa, CA 92626
P (800) 877-6372
F (714) 619-4662
www.mesvision.com

OptumHealth Behavioral Solutions of California

Jennifer Thompson Kinberger
Associate Director of Compliance
3111 Camino del Rio North #600
San Diego, CA 92108
P (619) 641-6601
F (855) 765-1406
jennifer.d.thompson@optum.com
www.liveandworkwell.com

The Holman Group

Ron Holman
President/CEO
9451 Corbin Avenue, Suite 100
Northridge, CA 91324
P (800) 321-2843
ronholman@holmangroup.com
www.holmangroup.com

PERFORMSMRx

Your innovative pharmacy benefits partner delivering improved clinical outcomes.

PerformRx offers clients:

- Drug therapy management
- Medicare Part D administration
- Prior authorization
- Rebate management
- Specialty utilization management
- Star rating support

PERFORMSMSPECIALTY

Access. Outcomes. Personalized Care.

Complete specialty pharmacy service. Total pharmaceutical care management.

PerformSpecialty offers clients:

- Disease management
- Adherence programs
- Utilization management
- Member support programs
- Fulfillment
- Refill reminders

Proud member of



All images are used under license for illustrative purposes only.
Any individual depicted is a model.



New CMS 340B reporting requirements are here!

ARE YOU READY?

Let us help you ensure that your Medicaid managed care organization is in compliance with the new CMS rule, which requires MCOs to accurately track and report on 340B prescriptions and patients.

www.340Bexchange.com

INTERESTED?

Contact Tom Mackintire, VP of Managed Care at: tmackintire@340Bx.com or 210.668.1804

3 Key Reasons



Why Health Plans Choose Shield HealthCare

EXPERIENCE

You Can Depend On...

Since 1957, Shield HealthCare has been the industry leader focused on fulfilling the medical supply needs of families and caregivers at home.

Shield HealthCare provides high quality disposable medical supply products including:

- Incontinence
- Enteral Nutrition
- Urological
- Ostomy
- Wound Care



99% of patients would
recommend us to a friend.*

*2016 Customer Satisfaction Survey by Press Ganey & Associates



www.shieldhealthcare.com

1

Utilization Review Expertise

- Custom UR reports provided to health plan to monitor usage and trends
- Electronic eligibility, billing and payment system accuracy and compliance
- Strict adherence to federal, state and local government

2

Compliance Expertise

All orders are reviewed by examiners for compliance with:

- Carrier requirements and Documentation Authorizations
- Allowable Quantities and Eligibility

3

Quality Control Expertise

If any order is missing required information, it is:

- Electronically routed back to a customer service agent to secure the information
- Patient/caregiver is promptly notified of any possible delay

To learn more about Shield HealthCare and discuss opportunities, please contact

Cheryl Hornberger | Vice President, Western Region
chornberger@shieldhealthcare.com



Share a Clear View®

www.navitus.com



Turning Complexity into Clarity Since 2003

- Control drug costs to manage risk, improve net return, and drive consumer affordability, without sacrificing quality care
- Enjoy a business model designed to help protect plan sponsors from drug price increases
- Improve bottom-line performance with lowest net-cost PMPM trend management that outperforms the national trend year over year

DRIVEN BY INNOVATION. POWERED BY PEOPLE.

At AxisPoint Health, we help payers make a difference in people's lives every day by engaging them to improve their health with our care management services, analytics, and software.

Contact us to find out how we combine innovative technology with outstanding service to reduce costs, improve outcomes, and boost member satisfaction.

POPULATION HEALTH
MANAGEMENT

CONDITION MANAGEMENT
SERVICES

CASE MANAGEMENT
SERVICES

MEMBER & PROVIDER
ENGAGEMENT

NEW MEMBER
HEALTH APPRAISAL

NURSE TRIAGE & ADVICE

CARE MANAGEMENT
SOFTWARE


PREDICTIVE ANALYTICS

READMISSION REDUCTION

TRANSITIONS OF CARE

CONTACT US

W: axispointhealth.com
P: 800.388.0090
E: innovate@axispointhealth.com

 twitter.com/axispointhealth
 linkedin.com/company/axispoint-health

AXISPOINT
HEALTH

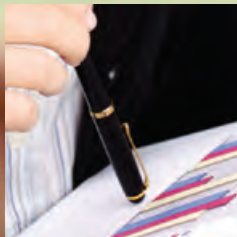


HEALTH PLAN MEMBERS



Your *California*-Based DRG and
APC Recovery Audit Expert

**Overpayment
Identification Services**
by experienced, innovative leaders



Recover up to 3% of paid claims dollars
www.varis1.com

Health Plan Members

Adventist Health Plan	Health Plan of San Joaquin
Aetna Health of California, Inc.	Health Plan of San Mateo
AIDS Healthcare Foundation	Heritage Provider Network
Alameda Alliance for Health	Inland Empire Health Plan
Alignment Health Plan	Inter Valley Health Plan
AmericasHealth Plan	Kaiser Permanente
Anthem Blue Cross	Kern Family Health Care
Aspire Health Plan	L.A. Care Health Plan
Blue Shield of California	Molina Healthcare of California
California Health & Wellness	Monarch Health Plan, Inc.
CalOptima	On Lok Lifeways
CalViva Health	Oscar Health Plan of California
Care1st Health Plan	Partnership HealthPlan of California
CenCal Health	San Francisco Health Plan
Central California Alliance for Health	Santa Clara Family Health Plan
Central Health Plan of California	SCAN Health Plan
Chinese Community Health Plan	Seaside Health Plan
Cigna Healthcare of California, Inc.	Sharp Health Plan
Community Care Health Plan	SIMNSA Health Plan
Community Health Group	Sutter Health Plus
Contra Costa Health Plan	UnitedHealthcare of California
Easy Choice, A Wellcare Company	Valley Health Plan
Gold Coast Health Plan	Ventura County Health Care Plan
Health Net	Western Health Advantage



2017 Plan Enrollment by County

		Number of plans present in 2017																																																				
		Adventist Health Plan	Aetna Health of California, Inc.	AIDS Healthcare Foundation	Alameda Alliance for Health	Alignment Health Plan	AmericasHealth Plan	Anthem Blue Cross	Aspire Health Plan	Blue Shield of California	California Health & Wellness	CalOptima	CalViva Health	Carelist Health Plan	CenCal Health	Central California Alliance for Health	Central Health Medicare Plan	Chinese Community Health Plan	Cigna HealthCare of California, Inc.	Community Care Health Plan	Community Health Group	Contra Costa Health Plan	Easy Choice, A WellCare Company	Gold Coast Health Plan	Health Net	Health Plan of San Joaquin	Health Plan of San Mateo	Heritage Provider Network	Inland Empire Health Plan	Inter Valley Health Plan	Kaiser Permanente	Kern Family Health Care	L.A. Care Health Plan	Molina Healthcare of California	Monarch Health Plan, Inc.	On Lok Lifeways	Oscar Health Plan of California	Partnership HealthPlan of California	San Francisco Health Plan	Santa Clara Family Health Plan	SCAN Health Plan	Seaside Health Plan	Sharp Health Plan	SIMNSA Health Plan	Sutter Health Plus	UnitedHealthcare of California	Valley Health Plan	Ventura County Health Care Plan	Western Health Advantage					
ALAMEDA	11	■	■				■			■				■					■						■						■																							
ALPINE	6	■					■			■	■								■						■																													
AMADOR	8	■					■			■	■								■						■							■																						
BUTTE	6	■					■			■	■								■						■																													
CALAVERAS	6	■					■			■	■								■						■																													
COLUSA	7	■					■			■	■								■						■																													
CONTRA COSTA	9	■					■			■	■								■			■			■							■																						
DEL NORTE	6	■					■			■	■								■						■																													
EL DORADO	10	■					■			■	■								■						■																													
FRESNO	10	■					■			■			■	■					■	■					■							■																						
GLENN	6	■					■			■	■								■						■																													
HUMBOLDT	6	■					■			■	■								■						■																													
IMPERIAL	10	■					■			■	■								■						■							■																						
INYO	6	■					■			■	■								■						■																													
KERN	10	■					■			■	■			■					■						■			■				■	■																					
KINGS	9	■	■				■			■			■						■						■				■			■																						
LAKE	6	■					■			■	■								■						■																													
LASSEN	6	■					■			■	■								■						■																													
LOS ANGELES	20	■	■	■	■		■			■	■			■		■			■			■		■				■	■	■	■	■	■		■																			
MADERA	8	■					■			■	■		■						■						■								■																					
MARIN	10	■					■			■	■								■						■																													
MARIPOSA	7	■					■			■	■	■							■						■							■																						
MENDOCINO	7	■					■			■	■								■						■																													
MERCED	7	■					■			■	■					■			■						■																							■						
MODOC	6	■					■			■	■								■						■																													
MONO	6	■					■			■	■								■						■																													
MONTEREY	7	■					■	■		■						■			■						■																													
NAPA	9	■					■			■	■								■						■							■																						
NEVADA	7	■					■			■	■								■						■																													

37

Adventist Health Plan

2100 Douglas Blvd • Roseville, CA 95661
Ph: (916) 789-4252

EXECUTIVE OFFICERS

Jeff Conklin
CEO

Jack Wagner
CFO

EXECUTIVE STAFF

Dan Rhodes
VP Plan Operations and
Market Development

Martha Miller
CMO

Ryan Lown
Director, Provider Strategy

Tracy Telefson
Director of Compliance

PRIMARY CONTACT

Dan Rhodes
Dan.rhodes@ah.org
(925) 321-0403

PLAN ORGANIZATION

Parent Company/Affiliate	Adventist Health System/West & Community Medical Centers
Recent mergers or acquisitions within California	None
Year founded	2013
Year licensed	2014
Tax status	For profit
Number of employees	0
Health Plan Enrollment	16,650

PLAN-PROVIDER ARRANGEMENTS

Model types (ranked in descending order)	Networks
Number of medical groups/IPAs	1
Number of Hospitals	7
Number of Physicians	650
Number of other clinicians	150
Number of Provider Offices	250

COMPENSATION METHODS

Physicians—primary care (ranked by method)	Fee-For-Service
Physicians—specialty (ranked by method)	Fee-For-Service
Hospitals (ranked by payment type)	Capitation, Fee-For-Service

PLAN PRODUCTS

PRODUCTS CURRENTLY OFFERED

Small group (2–50 employees)	None
Large group (50+ employees)	None
Medicare Advantage	None
Medi-Cal Managed Care	Yes
Medigap (Supplemental Insurance)	None
Special Needs Plans (SNPs)	None
Medicare Part D stand-alone	None
Access for Infants and Mothers	None
Healthy Kids	None
Major Risk Medical Insurance/GIP	None
Other	None

ANCILLARY PRODUCTS

Vision	None
Chiropractic	None
Dental	None
Prescription Drugs	None
Long Term Health Care	None
Life Insurance	None
Accidental Death & Dismemberment	None
Acupuncture	None
Substance Abuse	None
Massage Therapy	None
Durable Medical Equipment	None
Rehabilitation	None
Workers' Compensation	None

CALIFORNIA OFFICE LOCATIONS

Fresno
Los Angeles
Rancho Cucamonga
Sacramento
San Diego
San Francisco
Santa Ana
Thousand Oaks
Walnut Creek
Woodland Hills

EXECUTIVE OFFICERS

Mark Bertolini
*Chairman, CEO
and President*

Shawn Guertin
*Senior Executive Vice
President and Chief
Financial Officer*

Meg McCarthy
*Executive Vice President,
Operations and
Technology*

Rich Lee
President, West Region

EXECUTIVE STAFF

Gina Conflitti, M.D.
Regional Medical Director

Mary V. Anderson
Regional Legal Counsel

Greg Stevens
*Region Head of
Network Operations and
Medical Economics*

PRIMARY CONTACTS

Shannon Butler
Government Relations
(916) 374-4950

Anjie Coplin
*Corporate
Communications*
(214) 200-8056

Aetna Health of California, Inc.

2625 Shadelands Drive • Walnut Creek, CA 94898

Ph: (925) 948-4700 • Fax: (925) 948-4264 • www.aetna.com

PLAN ORGANIZATION

Parent Company/Affiliate	Aetna, Inc.
Recent mergers or acquisitions within California	None
Year founded	1956
Year licensed	1956
Tax status	For profit
Number of employees	2,100 full time
Health Plan Enrollment	Approx. 46,500,000 National (medical, dental and pharmacy) 1,565,218 California

PLAN-PROVIDER ARRANGEMENTS

Model types (ranked in descending order)	Network of Medical Groups and IPAs, Direct Contracts with Physicians
Number of medical groups/IPAs	0 owned, 90 contracted
Number of hospitals	0 owned, 375 contracted (Short-Term Acute, Long-Term Acute, and Children's Hospitals only)
Number of physicians	0 owned, 60,282 contracted
Number of other licensed clinicians	0 owned, 28,366 contracted (all providers types other than physicians)
Number of provider offices	0 owned, 39,511 contracted

COMPENSATION METHODS

Physicians—primary care (ranked by method)	All Markets: Capitation, Negotiated Fee Schedule
Physicians—specialty (ranked by method)	All Markets: Capitation, Negotiated Fee Schedule
Hospitals (ranked by payment type)	All Markets: Per Diem, Capitation, Discount off Charges

PLAN PRODUCTS

PRODUCTS CURRENTLY OFFERED

Small group (2–100 employees)	HMO, POS, PPO, and Indemnity
Large group (101+ employees)	EPO, HMO, PPO, POS, HRA, HAS, Other
Medicare Advantage	Yes
Medi-Cal Managed Care	No
Medigap (Supplemental Insurance)	Yes
Special Needs Plans (SNPs)	No
Medicare Part D stand-alone	Yes
Access for Infants and Mothers	No
Healthy Kids	No
Major Risk Medical Insurance/GIP	No
Other	Indemnity: HMO, PPO, POS, Other

ANCILLARY PRODUCTS

Vision	Yes
Chiropractic	Yes
Dental	Yes
Prescription Drugs	Yes
Long Term Health Care	Yes
Life Insurance	Yes
Accidental Death & Dismemberment	Yes
Acupuncture	Yes
Substance Abuse	Yes
Massage Therapy	Yes
Durable Medical Equipment	Yes
Rehabilitation	Yes
Workers' Compensation	No

EXECUTIVE OFFICE
6255 W. Sunset Blvd.
21st Floor
Los Angeles, CA 90028

EXECUTIVE STAFF
Michael Weinstein
President
Peter Reis
Senior Vice President
Michael Wohlfeiler,
JD, MD, AAHIVMS,
Chief of Medicine
Domestic United States
Donna Stidham, RN
Chief of Managed Care
Lyle Honig
Chief Financial Officer
Tom Myers
Chief of Public Affairs and
General Counsel
Sujeeth Lingutla
Chief Information Officer

PRIMARY CONTACTS
Jeffrey Blend
Government Relations
(202) 543-1081
Tom Myers
Public Affairs
(323) 860-5259

AIDS Healthcare Foundation

PHP (HMO SNP) – Medicare Advantage Part D HIV Special Needs Plan
PHC California – Medi-Cal Managed Care AIDS Special Needs Plan
1001 N. Martel Ave. • Los Angeles, CA 90046
Ph: (323) 436-5000 • Fax: (323) 337-9141 • www.positivehealthcare.org

PLAN ORGANIZATION

Parent Company/Affiliate. AIDS Healthcare Foundation
Recent mergers or acquisitions within California None
Year founded. 1987
Year licensed. 2006
Tax status Non-profit
Number of employees 90 California Managed Care Operations
Health Plan Enrollment 4,400 National
1,500 California

PLAN-PROVIDER ARRANGEMENTS

Model types (ranked in descending order) Direct Contracting with Physicians,
Network of Medical Groups and IPAs, Staff
Number of medical groups/IPAs 4 contracted
Number of hospitals 18 contracted
Number of physicians 26 owned; 1,338 contracted
Number of other licensed clinicians 616 contracted
Number of provider offices 46 owned National
15 owned California

COMPENSATION METHODS

Physicians—primary care (ranked by method). Individual Capitation, Fee-for Service
Physicians—specialty (ranked by method). Fee-For-Service
Hospitals (ranked by payment type) Discounted Charges, Diagnosis-Related Group,
Case Rates, Per Diem

PLAN PRODUCTS

PRODUCTS CURRENTLY OFFERED

Covered California (Individual Market) None
Individual market None
Small group (2–50 employees) None
Large group (50+ employees) None
Medicare Advantage None
Medi-Cal Managed Care None
Medigap (Supplemental Insurance) None
Special Needs Plans (SNPs) Medicare Advantage HMO, Medi-Cal HMO
Medicare Part D stand-alone None
Access for Infants and Mothers None
Healthy Kids None
Major Risk Medical Insurance/GIP None
Other None

ANCILLARY CARE

Vision Medicare Advantage HMO, Medi-Cal HMO
Chiropractic Medicare Advantage HMO, Medi-Cal HMO
Dental. Medicare Advantage HMO
Prescription Drugs. Medicare Advantage HMO, Medi-Cal HMO
Long Term Health Care Medi-Cal HMO
Life Insurance None
Accidental Death & Dismemberment None
Acupuncture None
Substance Abuse Medicare Advantage HMO, Medi-Cal HMO
Massage Therapy None
Durable Medical Equipment. Medicare Advantage HMO, Medi-Cal HMO
Rehabilitation Medicare Advantage HMO, Medi-Cal HMO
Workers' Compensation. None
Other (please specify) None

**CALIFORNIA
OFFICE LOCATIONS**

Ed Roberts Campus
3075 Adeline Street,
Suite 160
Berkeley, CA 94703
(510) 225-7200

EXECUTIVE OFFICERS

Scott Coffin
CEO

Matthew Woodruff
COO

Michael Griffis, MD
CMO

Gil Riojas
CFO

Matthew Levin
Chief Compliance Officer
and General Counsel

PRIMARY CONTACT

Matthew Levin
Chief Compliance Officer
and General Counsel
(510) 373-5647

Alameda Alliance for Health

1240 South Loop Road • Alameda, CA 94502

Ph: (510) 747-4500 • Fax: (510) 747-4508 • www.alamedaalliance.org

PLAN ORGANIZATION

Parent Company/Affiliate	Alameda Alliance Joint Powers Authority
Recent mergers or acquisitions within California	None
Year founded	1995
Year licensed	1995
Tax status	Non profit
Number of employees	268
Health Plan Enrollment	264,791

PLAN-PROVIDER ARRANGEMENTS

Model types (ranked in descending order)	Network of Medical Groups and IPAs; Direct Contracting with Physicians; Behavioral health network for the mild to moderate Medi-Cal benefit
Number of medical groups/IPAs	0 owned, 6 contracted
Number of hospitals	0 owned, 17 contracted
Number of physicians	0 owned, 4,798 contracted, including specialists

COMPENSATION METHODS

Physicians—primary care (ranked by method)	Fee-For-Service, Group Capitation, Individual Capitation
Physicians—specialty (ranked by method)	Fee-For-Service, Group Capitation
Hospitals (ranked by payment type)	Diagnosis-Related Group, Per Diem, Capitation

PLAN PRODUCTS

PRODUCTS CURRENTLY OFFERED

Individual market	None
Small group (2–50 employees)	None
Large group (50+ employees)	None
Medicare Advantage	None
Medi-Cal Managed Care	HMO
Medigap (Supplemental Insurance)	None
Special Needs Plans (SNPs)	None
Medicare Part D stand-alone	None
Access for Infants and Mothers	None
Medi-Cal Managed Care	HMO
Healthy Kids	None
Major Risk Medical Insurance/GIP	None
Other: Alliance Group Care	In-Home Supportive Services Workers in Alameda County: HMO

ANCILLARY PRODUCTS

Vision	HMO
Chiropractic	None
Dental	None
Prescription Drugs	HMO
Long Term Health Care	HMO
Life Insurance	None
Accidental Death & Dismemberment	None
Acupuncture	HMO
Substance Abuse	HMO
Massage Therapy	None
Durable Medical Equipment	HMO
Rehabilitation	None
Workers' Compensation	None

**CALIFORNIA
OFFICE LOCATION**

Headquarters
1100 W Town and Country Rd.
Suite 1600
Orange, CA 92868

EXECUTIVE OFFICERS

John Kao
CEO of Alignment Healthcare

Dawn Maroney
*President of Markets
Alignment Healthcare*

Katherine F. (Kathy) Feeny
*President of
Alignment Health Plan*

Don Furman, MD
*Chief Development Officer of
Alignment Healthcare*

John Adams
*Chief Financial Officer of
Alignment Healthcare*

John Kim, MD
*Chief Medical Officer of
Alignment Health Plan*

PRIMARY CONTACT

Alison Trinidad
*Marketing Strategy
& Public Relations*
(844) 310-2247

Alignment Health Plan

1100 W Town and Country Rd, Suite 1600 • Orange, CA 92868
Ph: (323) 728-7232 • Fax: (323) 728-8494 • www.alignmenthealthcare.com

PLAN ORGANIZATION

Parent Company/Affiliate Alignment Healthcare
Recent mergers or acquisitions within California N/A
Year founded 2003
Year licensed 2004
Tax status For-profit
Number of employees 260
Health Plan Enrollment 32,000

PLAN-PROVIDER ARRANGEMENTS

Model types (ranked in descending order) Network of Medical Groups and
Independent Practice Associations (IPAs);
Direct Contracting with Physicians

Number of medical groups/IPAs 55 contracted
Number of hospitals 100 contracted
Number of physicians 3 owned, 12,582 contracted
Number of other licensed clinicians 3 owned, 1,210 contracted
Number of provider offices 3 owned, 14,823 contracted

COMPENSATION METHODS

Physicians—primary care (ranked by method) Individual Capitation; Fee-For-Service including
withhold or bonus; Fee-For-Service;
Group Capitation; Salary

Physicians—specialty (ranked by method) Fee-For-Service; Group Capitation;
Individual Capitation; Fee-For-Service including
withhold or bonus; Salary

Hospitals (ranked by payment type) Diagnosis-Related Group; Per Diem; Case Rates;
Capitation; Discounted Charges

PLAN PRODUCTS

PRODUCTS CURRENTLY OFFERED

Covered California (Individual Market) None
Individual market None
Small group (2–50 employees) None
Large group (50+ employees) None
Medicare Advantage HMO
Medi-Cal Managed Care None
Medigap (Supplemental Insurance) None
Special Needs Plans (SNPs) HMO; C-SNP
Medicare Part D stand-alone None
Access for Infants and Mothers None
Healthy Kids None
Major Risk Medical Insurance/GIP None
Other None

ANCILLARY PRODUCTS

Vision HMO; C-SNP
Chiropractic None
Dental HMO; C-SNP
Prescription Drugs HMO; C-SNP
Long Term Health Care None
Life Insurance None
Accidental Death & Dismemberment None
Acupuncture HMO; C-SNP
Substance Abuse HMO; C-SNP
Massage Therapy None
Durable Medical Equipment HMO; C-SNP
Rehabilitation HMO; C-SNP
Workers' Compensation None
Other (please specify) None

EXECUTIVE OFFICERS

Dr. Enrique de la Garza
CEO

Rudy Diaz
COO

Sonia DeMarta
CFO

EXECUTIVE STAFF

Sean Scott
Chief Compliance Officer

Amy Slade
Executive Assistant to CEO/
Project Manager

Arleen Bricio
Contracts Manager

Alan Vasquez
Provider Relations
Contracting Representative

Jackeline Evangelista
Accounting Coordinator

PRIMARY CONTACTS

Dr. Enrique de la Garza
CEO
(800) 633-3313

David Cruz
Government Relations
(800) 633-3313

David Cruz
Public Affairs
(800) 633-3313

AmericasHealth Plan

200 South Wells Road, Suite 200 • Ventura, CA 93004

Ph: (800) 633-3313 • Fax: (805) 673-3962 • www.americashp.com

PLAN ORGANIZATION

Parent Company/Affiliate Clinicas del Camino Real
Recent mergers or acquisitions within California None
Year founded 2014
Year licensed 2015
Tax status For profit
Number of employees 8
Health Plan Enrollment 1,000

PLAN-PROVIDER ARRANGEMENTS

Model types (ranked in descending order) Network of Medical Groups
Number of Medical Groups/IPAs 1 contracted
Number of hospitals 8 contracted
Number of physicians 500+ contracted
Number of other licensed clinicians 250+ contracted, 47 owned
Number of provider offices 250+ contracted, 13 owned

COMPENSATION METHODS

Physicians – primary care (ranked by method) Capitation, Fee-For-Service
Physicians – specialty (ranked by method) Fee-For-Service
Hospitals (ranked by payment type) Fee-For-Service

PLAN PRODUCTS

PRODUCTS CURRENTLY OFFERED Medicare, Commercial, Medi-Cal
Covered California (Individual Market) No
Individual market No
Small group (2–50 employees) Yes
Large group (50+ employees) Yes
Medicare Advantage Yes
Medi-Cal Managed Care Yes
Medigap (Supplemental Insurance) Yes
Special Needs Plans (SNPs) No
Medicare Part D stand-alone No
Access for Infants and Mothers Yes
Healthy Kids Yes
Major Risk Medical Insurance/GIP No
Other No

ANCILLARY PRODUCTS

Vision Yes
Chiropractic Yes
Dental Yes
Prescription Drugs Yes
Long Term Health Care No
Life Insurance No
Accidental Death & Dismemberment No
Acupuncture Yes
Substance Abuse Yes
Massage Therapy No
Durable Medical Equipment Yes
Rehabilitation Yes
Workers' Compensation Yes

CALIFORNIA OFFICE LOCATIONS

Costa Mesa
Fresno
Glendale
Los Angeles
Newbury Park
Rancho Cordova
Riverside
Sacramento
San Diego
San Francisco
Santa Barbara
San Jose
Thousand Oaks
Visalia
Walnut Creek
Woodland Hills

EXECUTIVE OFFICERS

Joseph R. Swedish
CEO of Anthem, Inc.

Brian Ternan
*California President
of Anthem Blue Cross*

Steve Melody
*President of
Anthem Blue Cross
Medicaid Health Plan*

John Gallina
CFO

EXECUTIVE STAFF

Dr. Jacob Asher
*Medical Director,
Anthem Blue Cross*

Craig Laidig
Legal Counsel

Darrel Ng
Public Relations

Alan Rosenberg
Pharmacy Director

Shawn Forrester
Provider Solutions

PRIMARY CONTACTS

Mike Prosis
*Government Relations
(916) 403-0527*

Darrel Ng
*Public Relations
(916) 403-0528*

Anthem Blue Cross

21555 Oxnard Street • Woodland Hills, CA 91367

Ph: (818) 234-2345 • Fax: (805) 713-7736 (for providers) • www.anthem.com/ca

PLAN ORGANIZATION

Parent Company/Affiliate	Anthem, Inc. Life and Health
Recent mergers or acquisitions within California	Merged with Anthem, Inc. in November 2004
Year founded	1937
Year licensed	1993
Tax status	For profit
Number of employees	8,000 full time
Health Plan Enrollment	40 million members Anthem, Inc. 8.5 million members California

PLAN-PROVIDER ARRANGEMENTS

Model types (ranked in descending order)	Network of Medical Groups and IPAs, Direct Contracting with Physicians
Number of medical groups/IPAs	191 contracted
Number of hospitals	378 contracted
Number of physicians	55,945 contracted
Number of other licensed clinicians	None
Number of provider offices	0 owned, 20,931 contracted

COMPENSATION METHODS

Physicians—primary care (ranked by method)	Other (Fee Schedule), Group Capitation, Individual Capitation
Physicians—specialty (ranked by method)	Other (Fee Schedule), Group Capitation
Hospitals (ranked by payment type)	Per Diem, Capitation, Case Rates, Discounted Charges

PLAN PRODUCTS

PRODUCTS CURRENTLY OFFERED

Covered California (Individual Market)	PPO, HMO
Individual market	HMO, PPO, Other
Small group (2–50 employees)	HMO, PPO
Large group (50+ employees)	HMO, PPO, POS, Other
Medicare Advantage	HMO, PPO
Medigap (Supplemental Insurance)	PPO
Special Needs Plans (SNPs)	No
Medicare Part D stand-alone	PPO
Access for Infants and Mothers	HMO, PPO
Medi-Cal Managed Care	Other
Healthy Kids	No
Major Risk Medical Insurance/GIP	PPO
Other (California Kids, Interim High Risk)	PPO

ANCILLARY CARE

Vision	HMO, PPO, POS
Chiropractic	None
Dental	HMO, PPO, POS
Prescription Drugs	HMO, PPO, POS
Long Term Health Care	No
Life Insurance	Yes
Accidental Death & Dismemberment	No
Acupuncture	HMO, PPO, POS
Substance Abuse	None
Massage Therapy	None
Durable Medical Equipment	None
Rehabilitation	None
Workers' Compensation	PPO

**CALIFORNIA
OFFICE LOCATIONS**

Monterey, CA
Salinas, CA

EXECUTIVE OFFICERS

Laura Zehm
CEO and President

Scott Kelly
COO

Matt Morgan
CFO

Dr. Alan Sokolow
CMO

Phil Bowmer
Interim Sales Chief

Melissa Hall
Chief Compliance Officer

PRIMARY CONTACTS

GOVERNMENT RELATIONS

Scott Kelly
COO
(831) 657-0700

PUBLIC AFFAIRS

Mary Barker
*Director Communications
and Marketing*
(831) 625-2757

Aspire Health Plan

10 Ragsdale Drive, Suite 101 • Monterey, CA 93940

Ph: (831) 657-0700 • Fax: (831) 657-0703 • www.aspirehealthplan.org

PLAN ORGANIZATION

Parent Company/Affiliate	Montage Health (formerly Community Hospital Foundation) and Salinas Valley Memorial Healthcare System
Recent mergers or acquisitions within California	None
Year founded	2012
Year licensed	2013
Tax status	Non Profit
Number of employees	25
Health Plan Enrollment	2,400

PLAN-PROVIDER ARRANGEMENTS

Model types (ranked in descending order)	Network of Medical Groups and IPAs; direct contracts – other licensed clinicians
Number of Medical Groups/IPAs	1 contracted
Number of hospitals	4 contracted
Number of physicians	465 contracted
Number of other licensed clinicians	100 contracted

COMPENSATION METHODS

Physicians – primary care (ranked by method)	FFS
Physicians – specialty (ranked by method)	FFS
Hospitals (ranked by payment type)	DRGs and capitation

PLAN PRODUCTS

PRODUCTS CURRENTLY OFFERED

Medicare Advantage	HMO, HMO-POS
------------------------------	--------------

CALIFORNIA OFFICE LOCATIONS

Costa Mesa, El Dorado Hills,
El Segundo, Fresno, Lodi,
Ontario, Rancho Cordova,
Redding, Sacramento (2 offices),
San Diego, San Francisco,
San Jose, Valencia, Walnut Creek,
Woodland Hills

EXECUTIVE OFFICERS

Paul Markovich
President and
Chief Executive Officer

Jeff Baillet, M.D.
Executive Vice President, Health
Care Quality
and Affordability

Nitin Bhargava
Senior Vice President,
Employer Markets

David Fields
Executive Vice President,
Markets; President, Care1st

Seth A. Jacobs, Esq.
Senior Vice President,
General Counsel and
Corporate Secretary

Peter Long
President and CEO, Blue Shield
of California Foundation

Michael Mathias
Senior Vice President and
Chief Information Officer

Michael Murray
Senior Vice President and
Chief Financial Officer

Mary O'Hara
Senior Vice President and
Chief Human Resources Officer

Jeff Robertson
Senior Vice President and
Chief Marketing Officer

Marcus Thygeson, M.D., M.P.H.
Senior Vice President,
Chief Health Officer

Todd Walthall
Senior Vice President,
Customer Experience

Amy Yao
Senior Vice President
and Chief Actuary

EXECUTIVE STAFF

Margaret Anderson
Vice President, Senior Markets

Patrice Bergman
Vice President and General
Manager, Specialty

Michael Beuoy
Vice President, Network
and Trend Analytics

Kathleen Billingsley
Vice President, CalPERS

Bill Brown
Vice President,
Business Platform Services

Gary Cohen
Vice President, Public Affairs

Michael Dahlem
Vice President,
IT Shared Services

Espen Dahlen
Vice President, Total Rewards

Jim Elliott
Vice President, Producer and
Channel Partner Relations,
Enterprise Sales and Service

Michael Ellis
Vice President and
Managing Attorney

Gary Cohen
Vice President, Public Affairs

Amanda Flaum
Chief Operating Officer, Care1st

Michael Gebhart
Vice President, Finance

Diana G. Gibson Pace
Vice President, Premier
and Labor Accounts

Susan Hallett
Vice President,
ACO Strategic Partnerships

Ruth Hendrickson
Vice President, HR Business
Partner, Markets

Larry Hilty
Vice President,
Strategic Alliances

Chris Jaeger, M.D., M.B.A.
Vice President, ACO Strategy
and Product Development

Keith Kim
Vice President,
Applications Development

Tina Kibler
Vice President,
Internal Audit Services

Robert Losier
Vice President,
IT Infrastructure Services

Alvin Loving
Vice President,
IT Shared Services

Edward Lui
Vice President, Underwriting

Haley Mixon
Vice President, HR Business
Partner, Corporate

Matt Nye
Vice President,
Pharmacy Services

Arminé Papouchian
Vice President,
Provider Network Management

Daniel Prettyman
Vice President, Markets Finance

Lina Saadzi
Vice President,
Cost of Healthcare Analytics
and HCQA Finance

Shayna Schulz
Vice President, Customer Care

Hope Scott
Vice President, Chief Risk and
Chief Compliance Officer

Michael Sheils
Vice President,
Corporate Shared Services

Steve Shivinsky
Vice President, Corporate
Communications

Jeff Smith
Vice President, Individual
and Family Plans

Mike Stuart
Vice President,
Corporate Controller

Cecilia Sun
Vice President, Transformation,
Multi-Channel Strategy

Charles Sweeris, Esq.
Vice President,
Deputy General Counsel

Devon Valencia
Vice President,
IT Program Delivery

Millie Virgil
Vice President, Enterprise
Planning and Implementation

Melissa Welch, M.D., M.P.H.
Vice President, Clinical Quality,
Network and Markets Support

Darrin Wells
Vice President, Network
and Trend Analytics

Bryce Williams
Vice President, Wellbeing

Karen Xie
Vice President,
Enterprise Architecture

Steven Young
Vice President, Chief
Information Security Officer

PRIMARY CONTACT

Gary Cohen
Vice President, Public Affairs

Blue Shield of California

50 Beale Street • San Francisco, CA 94105
Ph: (415) 229-5000 • www.blueshieldca.com

PLAN ORGANIZATION

Parent Company/Affiliate California Physicians' Service dba Blue Shield of California
Recent mergers or acquisitions within California . . . None
Year founded 1939
Year licensed 1939
Tax status Non-profit
Number of employees ~ 6,800
Health Plan Enrollment 882,462 (HMO); 2,512,963 (PPO); 4,102,319 (Total)

PLAN-PROVIDER ARRANGEMENTS

Model types (ranked in descending order) HMO — Direct contracting with Network of Medical Groups
and IPAs; PPO — Direct Contracting with Physicians
Number of medical groups/IPAs 0 owned, 306 contracted medical groups/IPAs (HMO)
Number of hospitals 0 owned, 323 contracted hospitals (HMO);
0 owned, 385 contracted hospitals (PPO)
Number of physicians 0 owned, 12,890 PCPs (HMO); 23,331 PCPs (PPO)
Number of other licensed clinicians 0 owned, 34,797 specialists (HMO);
52,397 contracted specialists (PPO)
Number of provider offices 0 owned, 50,521 provider offices (HMO);
84,521 provider offices (PPO)

COMPENSATION METHODS

Physicians—primary care (ranked by method) Fee Schedule (PPO), Capitation (HMO)
Physicians—specialty (ranked by method) Fee Schedule (PPO), Capitation (HMO)
Hospitals (ranked by payment type) Per Diem, Discount off Charges,
Fee Schedule, Case Rates, Capitation

PLAN PRODUCTS

PRODUCTS CURRENTLY OFFERED

Covered California. For individual and family plans (IFP), Small Group plans
Individual market HMO, PPO
Small group (2–50 employees) HMO, PPO, POS
Large group (50+ employees) HMO, PPO, POS
Medicare Advantage HMO
Medigap (Supplemental Insurance) Offered for individuals
Special Needs Plans (SNPs) None
Medicare Part D stand-alone For individual and group plans
Access for Infants and Mothers None
Medi-Cal Managed Care Yes
Healthy Kids None
Major Risk Medical Insurance/GIP For individual and family plans (IFP)
Other Shared Advantage

ANCILLARY PRODUCTS

Vision PPO
Chiropractic Available as a discounted service: HMO, PPO
Dental HMO, PPO
Prescription Drugs Not available as a stand-alone product
Long Term Health Care No
Life Insurance Offered
Accidental Death & Dismemberment Offered in conjunction with our Life Insurance
Acupuncture Available as a discounted service: HMO; PPO
Substance Abuse Not available as a stand-alone product
Massage Therapy Available as a discounted service rather than
as an Ancillary Product
Durable Medical Equipment Not available as an Ancillary Product
Rehabilitation Not available as an Ancillary Product
Workers' Compensation No
Other Not applicable

CALIFORNIA OFFICE LOCATIONS

Headquarters
1740 Creekside Oaks Drive,
Suite 200
Sacramento, CA 95833

Butte
901 Bruce Road,
Suite 150
Chico, CA 95928

El Dorado
550 Main Street, Suite B2
Placerville, CA 95667

Imperial
1699 W. Main Street,
Suite B
El Centro, CA 92243

EXECUTIVE STAFF

Patricia T. Clarey
*Chief State Health Programs
and Regulatory Relations Officer*

Jeff Grahling, MBA
*Senior Vice President,
Performance and
Ancillary Programs*

Farid Hassanpour, DO, MBA
Chief Medical Director

**Barbara L. Swartos,
BSN, MBA, CCM**
*Vice President, Medical
Management*

Kathleen Lang, DPA
*Vice President, Operations,
Imperial County*

Garrett Leaf
Senior Vice President, Finance

Erik Korolev
*Vice President, Network
Development & Contracting*

Francie Morris, RN, CPHQ
*Vice President, Quality
Improvement*

PRIMARY CONTACT

Jeff Grahling, MBA
*Senior Vice President,
Performance and
Ancillary Programs*
(916) 246-3755

California Health & Wellness

1740 Creekside Oaks Drive, Suite 200 • Sacramento, CA 95833
Ph: (916) 246-3600 • Fax: (877) 502-7255 • www.CAHealthWellness.com

PLAN ORGANIZATION

Parent Company/Affiliate	Centene Corporation
Recent mergers or acquisitions within California	None
Year founded	2013
Year licensed	2013
Tax status	For Profit
Number of employees	220
Health Plan Enrollment	189,000

PLAN-PROVIDER ARRANGEMENTS

Model types (ranked in descending order)	Direct Contracting with Physicians, Single Medical Group, Network of Medical Groups & IPAs
Number of Medical Groups/IPAs	0 owned, 485 contracted
Number of hospitals	0 owned, 39 contracted
Number of physicians	0 owned, 5,450 contracted
Number of other licensed clinicians	0 owned, 1,614 contracted
Number of provider offices	0 owned, 1,085 contracted

COMPENSATION METHODS

Physicians – primary care (ranked by method)	Fee-For-Service, Group Capitation
Physicians – specialty (ranked by method)	Fee-For-Service
Hospitals (ranked by payment type)	Per Diem, Diagnosis-Related Group, Case Rates

PLAN PRODUCTS

PRODUCTS CURRENTLY OFFERED

Individual market	None
Small group (2–50 employees)	None
Large group (50+ employees)	None
Medicare Advantage	None
Medi-Cal Managed Care	HMO
Medigap (Supplemental Insurance)	None
Special Needs Plans (SNPs)	None
Medicare Part D stand-alone	None
Access for Infants and Mothers	None
Healthy Kids	None
Major Risk Medical Insurance/GIP	None
Other	None

ANCILLARY PRODUCTS

Vision	HMO, PPO
Chiropractic	None
Dental	None
Prescription Drugs	Other
Long Term Health Care	POS
Life Insurance	None
Accidental Death & Dismemberment	None
Acupuncture	None
Substance Abuse	None
Massage Therapy	None
Durable Medical Equipment	None
Rehabilitation	None
Workers' Compensation	None
Other (please specify)	Disease Management, Behavioral Health, Correctional Health

EXECUTIVE OFFICERS

Michael Schrader
Chief Executive Officer

Gary Crockett
Chief Counsel

Dr. Richard Helmer
Chief Medical Officer

Ladan Khamseh
Chief Operating Officer

Nancy Huang
Interim Chief Financial Officer

Len Rosignoli
Chief Information Officer

EXECUTIVE STAFF

Dr. Richard Bock
Deputy Chief Medical Officer

Candice Gomez
*Executive Director,
Program Implementation*

Silver Ho
*Executive Director,
Compliance*

Caryn Ireland
*Executive Director,
Quality Analytics*

Tracy Hitzeman
*Executive Director,
Clinical Operations*

Phil Tsunoda
*Executive Director,
Public Policy and
Public Affairs*

PRIMARY CONTACT

Arif Shaikh
*Director,
Government Affairs*
(714) 246-8418

CalOptima (Orange County Health Authority)

505 City Parkway West • Orange, CA 92868

Ph: (714) 246-8400 • Fax: (714) 246-8492 • www.caloptima.org

PLAN ORGANIZATION

Parent Company/Affiliate None
Recent mergers or acquisitions within California None
Year founded 1995
Year licensed 2000
Tax status Non Profit
Number of employees 1,113 full time, 9 part time, 8 as needed
Health Plan Enrollment 795,347

PLAN-PROVIDER ARRANGEMENTS

Model types (ranked in descending order) Medical groups/IPAs and HMOs
Number of medical groups/IPAs 0 owned, 14 contracted
Number of hospitals 0 owned, 39 contracted
Number of physicians 0 owned, 6,869 contracted
Number of other licensed clinicians 0 owned, 1,157 contracted
Number of provider offices 0 owned, 1,411 contracted

COMPENSATION METHODS

Physicians—primary care (ranked by method) Group Capitation, Fee-For-Service
Physicians—specialty (ranked by method). Group Capitation, Fee-For-Service
Hospitals (ranked by payment type) Per Diem, Case Rates,
Diagnosis-Related Group, Capitation

PLAN PRODUCTS

PRODUCTS CURRENTLY OFFERED

Individual market. None
Small group (2–50 employees) None
Large group (50+ employees) None
Medicare Advantage See SNP
Medigap (Supplemental Insurance) None
Special Needs Plans (SNPs) HMO
Medicare Part D stand-alone None
Access for Infants and Mothers None
Medi-Cal Managed Care HMO
Healthy Kids None
Major Risk Medical Insurance/GIP None
Program of All-Inclusive Care for the Elderly (PACE) HMO
Other None

ANCILLARY PRODUCTS

Vision None
Chiropractic None
Dental. None
Prescription Drugs. None
Long Term Health Care None
Life Insurance None
Accidental Death & Dismemberment None
Acupuncture None
Substance Abuse None
Massage Therapy None
Durable Medical Equipment None
Rehabilitation None
Workers' Compensation. None
Other (please specify) None

EXECUTIVE OFFICERS

Gregory Hund
CEO

William Gregor
CFO

Patrick Marabella, M.D.
CMO

Mary Beth Corrado
CCO

PRIMARY CONTACT

Cheryl Hurley
Office Manager/
Commission Clerk

CalViva Health (Fresno-Kings-Madera Regional Health Authority)

7625 N. Palm Ave., Suite 109 • Fresno, CA 93711

Ph: (559) 540-7840 • www.calvivahealth.org

PLAN ORGANIZATION

Parent Company/Affiliate Fresno Kings Madera Regional Health Authority
Recent mergers or acquisitions within California No recent mergers or acquisitions
Year founded 2009
Year licensed 2010
Status Not-for-profit
Number of employees 16 Staff, subcontracted for administrative services
Health Plan Enrollment 358,488

PLAN-PROVIDER ARRANGEMENTS

Model types (ranked in descending order) All direct contracts with physician providers
Number of medical groups/IPAs 3 IPAs
Number of hospitals 11 hospitals, contracted
Number of physicians 1,360 contracted
Number of provider offices 658

COMPENSATION METHODS

Physicians – primary care FFS percent of Medi-Cal Rates and Capitation
Physicians – specialty FFS percent of Medi-Cal Rates
Hospitals Percent of Medi-Cal Rates

PLAN PRODUCTS

PRODUCTS CURRENTLY OFFERED

Medi-Cal Managed Care Yes
Special Needs Plans (SPD) Yes
MSO Services No

ANCILLARY PRODUCTS

Prescription Drugs Yes
Substance Abuse Yes
Durable Medical Equipment Yes

**CALIFORNIA
OFFICE LOCATIONS**

601 Potrero Grande Drive
Monterey Park, CA 91755

3131 Camino Del Rio, #350
San Diego, CA 92108

100 N. Winchester Blvd, #290
Santa Clara, CA 95050

2609 E. Hammer Lane
Stockton, CA 95210

833 Auto Center Drive, #D
Palmdale, CA 93551

44426 10th Street West
Lancaster, CA 93534

EXECUTIVE OFFICERS

Paul Markovich
CEO

David Fields
Interim President

Marcus Thygeson, MD
Interim CMO

Amanda Flaum
COO

EXECUTIVE STAFF

Alan Bloom
Legal and Regulatory

Steven Chin
Provider Network Operations

Tracie Howell
Member Services

Theresa Stanley, RN
Utilization Management

David Wedemeyer
Quality Management

PRIMARY CONTACT

Gary Cohen
VP Public Affairs
(415) 229-5110

Care1st Health Plan

601 Potrero Grande Drive • Monterey Park, CA 91755

Ph: (323) 889-6638 • Fax: (323) 889-6270 • www.care1st.com

PLAN ORGANIZATION

Recent mergers or acquisitions within California	2015
Year founded	1994
Year licensed	1995
Tax status	Not for profit
Number of employees	1,000
Health Plan Enrollment	437,010

PLAN-PROVIDER ARRANGEMENTS

Model types (ranked in descending order)	Staff; Network of Medical Groups and Independent Practice Associations (IPAs); Direct Contracting with Physicians; Direct Contracting with Federally Qualified Health Centers
Number of medical groups/IPAs	84
Number of hospitals	115
Number of physicians	15,500
Number of other licensed clinicians	0
Number of provider offices	23,800

COMPENSATION METHODS

Physicians—primary care (ranked by method)	Group Capitation, FQHC capitation
Physicians—specialty (ranked by method)	Under Group Capitation, Fee-For-Service
Hospitals (ranked by payment type)	Per Diem, Capitation, Discounted Charges, Diagnosis-Related Group, Case Rates

PLAN PRODUCTS

PRODUCTS CURRENTLY OFFERED

Small group (2–50 employees)	None
Large group (50+ employees)	None
Medicare Advantage	HMO
Medigap (Supplemental Insurance)	None
Special Needs Plans (SNPs)	HMO
Medicare Part D stand-alone	None
Access for Infants and Mothers	None
Medi-Cal Managed Care	HMO
Healthy Kids	None
Major Risk Medical Insurance/GIP	None
Other	None

ANCILLARY PRODUCTS

Vision	HMO
Chiropractic	HMO
Dental	HMO
Prescription Drugs	HMO
Long Term Health Care	None
Life Insurance	None
Accidental Death & Dismemberment	None
Acupuncture	HMO
Substance Abuse	HMO
Massage Therapy	None
Durable Medical Equipment	HMO
Rehabilitation	HMO
Workers' Compensation	None

**CALIFORNIA
OFFICE LOCATIONS**

Santa Barbara, CA
San Luis Obispo, CA

EXECUTIVE OFFICERS

Robert Freeman
CEO

David Ambrose
CFO/Treasurer

Paul Jaconette
COO

Barrie Parker
CIO

Darryl Leong, MD
CMO

Takashi M. Wada, MD
Deputy CMO

EXECUTIVE STAFF

Caitlin Larsen, JD
Director of Legal Affairs

Kashina Bishop
Director of Finance

Jeffrey Januska, PharmD
Pharmacy Director

Marina Owen
Provider Services Director/
Community Relations

Donna Slimak
Member Services Director

Florence Chan
Director of Health Services

Carlos Hernandez
Director of Quality/
Decision Support

Karyn Fish
Human Resources Director

Allen Freymuth
Director of Claims

Michael Harris
Director of Administrative/
Government Services

PRIMARY CONTACTS

Robert Freeman
CEO
(805) 685-9525, ext. 1011

Michael Harris
Government Relations
(805) 685-9525, ext. 1012

Robert Freeman
Public Affairs
(805) 685-9525, ext. 1011

CenCal Health

4050 Calle Real • Santa Barbara, CA 93110

Ph: (805) 685-9525 • Fax: (805) 685-8292 • www.cencalhealth.org

PLAN ORGANIZATION

Parent Company/Affiliate	Santa Barbara/San Luis Obispo Regional Health Authority
Recent mergers or acquisitions within California	CenCal Health is a public entity
Year founded	1983
Year licensed	2000
Tax status	Non profit
Number of employees	202 full time
Health Plan Enrollment	179,000

PLAN-PROVIDER ARRANGEMENTS

Model types (ranked in descending order)	Direct Contracting with Physicians
Number of hospitals	0 owned, 9 contracted
Number of physicians	0 owned, 1,252 contracted
Number of provider offices	0 owned, 246 contracted

COMPENSATION METHODS

Physicians—primary care (ranked by method)	Individual and Group Capitation, Fee-For-Service, Withhold and Pay for Performance
Physicians—specialty (ranked by method)	Fee-For-Service, Group Capitation
Hospitals (ranked by payment type)	Per Diem/DRG (Inpatient), Percent of Charges (Inpatient and Outpatient), Fee-For-Service (Outpatient), Capitation

PLAN PRODUCTS

PRODUCTS CURRENTLY OFFERED

Individual market	None
Small group (2–50 employees)	None
Large group (50+ employees)	None
Medicare Advantage	None
Medigap (Supplemental Insurance)	None
Special Needs Plans (SNPs)	None
Medicare Part D stand-alone	None
Access for Infants and Mothers	HMO
Medi-Cal Managed Care	HMO
Major Risk Medical Insurance/GIP	None
Other	None

ANCILLARY PRODUCTS

Vision	HMO
Chiropractic	HMO
Dental	None
Prescription Drugs	HMO
Long Term Health Care	HMO
Life Insurance	None
Accidental Death & Dismemberment	None
Acupuncture	HMO
Substance Abuse	HMO
Massage Therapy	None
Durable Medical Equipment	HMO
Rehabilitation	HMO
Workers' Compensation	None

Central California Alliance for Health

(Santa Cruz-Monterey-Merced Managed Medical Care Commission)

1600 Green Hills Road, Suite 101 • Scotts Valley, CA 95066

Ph: (831) 430-5500 • Fax: (831) 430-5882 • www.ccah-alliance.org

CALIFORNIA OFFICE LOCATIONS

Scotts Valley (*Main office*)
Salinas and Merced
(*Regional offices*)

EXECUTIVE OFFICERS

Alan McKay
Chief Executive Officer

Dale Bishop, MD
Chief Medical Officer

Mark Emery
Chief Information Officer

Scott Fortner
Chief Administrative Officer

Kathy Neal
Chief Health Services Officer

Stephanie Sonnenshine
Chief Operating Officer

Barry Staton
Chief Financial Officer

EXECUTIVE STAFF

Danita Carlson
Government Relations Director

Lilia Chagolla
*Regional Operations
Director – Monterey*

Jane Daughenbaugh
Behavioral Health Director

John Hanley, PharmD
Pharmacy Director

Kathleen McCarthy
Business Development Director

Jennifer Mockus
*Regional Operations
Director – Merced*

Elizabeth Murphy, MD
Medical Director

Julio Porro, MD
Medical Director

Jenifer Mandella
Compliance Director

Jordan Turetsky
Provider Services Director

Jan Wolf
Member Services Director

PRIMARY CONTACTS

Danita Carlson
Government Relations
(831) 430-5603

Scott Fortner
Public Affairs
(831) 430-5630

PLAN ORGANIZATION

Parent Company/Affiliate None
Recent mergers or acquisitions within California None
Year founded 1996
Year licensed 2000
Tax status Non profit
Number of employees 482
Health Plan Enrollment 332,821

PLAN-PROVIDER ARRANGEMENTS

Model types (ranked in descending order) Direct Contracting with Physicians
Number of medical groups/IPAs 0 owned, 272 contracted
Number of hospitals 0 owned, 15 contracted
Number of physicians 0 owned, 7,143 contracted
Number of other licensed clinicians 0 owned, 742 contracted
Number of provider offices 0 owned, 570 contracted

COMPENSATION METHODS

Physicians – primary care (ranked by method) Fee-For-Service, Capitation, Incentive Program
Physicians – specialty (ranked by method) Fee-For-Service, Incentive Program
Hospitals (ranked by payment type) Discounted Charges; Per Diem; Case Rates

PLAN PRODUCTS

PRODUCTS CURRENTLY OFFERED

Individual market None
Small group (2–50 employees) None
Large group (50+ employees) None
Medicare Advantage None
Medi-Cal Managed Care County Organized Health System
Medigap (Supplemental Insurance) None
Special Needs Plans (SNPs) None
Medicare Part D stand-alone None
Medi-Cal Access Program HMO
Major Risk Medical Insurance/GIP None
Other In-Home Supportive Services: HMO

ANCILLARY PRODUCTS

Vision COHS, HMO
Chiropractic COHS, HMO
Dental None
Prescription Drugs COHS, HMO
Long Term Health Care COHS
Life Insurance None
Accidental Death & Dismemberment None
Acupuncture COHS, HMO
Substance Abuse HMO
Massage Therapy None
Durable Medical Equipment COHS, HMO
Rehabilitation None
Workers' Compensation None
Other None

EXECUTIVE OFFICERS

Lee Suyenaga
Chief Executive Officer

An Pang Chieng, M.D.
Chief Medical Officer

PRIMARY CONTACT

Annie Hsu Shieh
Senior Compliance Counsel
(626) 388-2390, ext. 2885

Central Health Medicare Plan

1540 Bridgegate Drive • Diamond Bar, CA 91765

Ph: (626) 388-2390 • Fax: (626) 388-2361 • www.centralhealthplan.com

PLAN ORGANIZATION

Parent Company/Affiliate AHMC Central Health LLC
Recent mergers or acquisitions within California Acquired on 11/18/2011
Year founded 2004
Year licensed 2004
Tax status For profit
Number of employees 159 full time, 5 part time (as of 12/21/16)
Health Plan Enrollment 33,314 (as of 9/30/16)

PLAN-PROVIDER ARRANGEMENTS

Model types (ranked in descending order) Staff, Single Medical Group,
Network of Medical Groups and IPAs,
Direct Contracting with Physicians
Number of medical groups/IPAs 57
Number of hospitals 75
Number of physicians 5,579
Number of other licensed clinicians 1,097
Number of provider offices 6,162

COMPENSATION METHODS

Physicians—primary care (ranked by method). Fee-For-Service, Individual Capitation,
Group Capitation
Physicians—specialty (ranked by method) Fee-For-Service, Group Capitation
Hospitals (ranked by payment type) Per Diem, Diagnosis-Related Group,
Case Rates, Capitation

PLAN PRODUCTS

PRODUCTS CURRENTLY OFFERED

Medicare Advantage HMO
Special Needs Plans (SNPs) HMO

ANCILLARY PRODUCTS

Vision HMO
Chiropractic HMO
Dental HMO
Prescription Drugs HMO
Acupuncture HMO
Substance Abuse HMO
Durable Medical Equipment HMO
Rehabilitation HMO

EXECUTIVE OFFICER

Brenda Yee
CEO

EXECUTIVE STAFF

Amy Tsui
CFO

Larry Loo
COO

Keith Minard
CIO

Carmen Dobry
Director, Regulatory
Affairs and Corporate
Compliance Officer

PRIMARY CONTACT

Carmen Dobry
Director, Regulatory
Affairs and Corporate
Compliance Officer
(415) 955-8800

Chinese Community Health Plan

445 Grant Ave., Suite 700 • San Francisco, CA 94108

Ph: (415) 955-8800 • Fax: (415) 955-8818 • www.CCHPhmo.com

PLAN ORGANIZATION

Parent Company/Affiliate	Chinese Hospital Association
Tax status	For profit
Year founded	1984
Year licensed	1985
Number of employees	120
Health Plan Enrollment	29,927

PLAN-PROVIDER ARRANGEMENTS

Model Types (ranked in descending order)	Network of Medical Groups and Independent Practice Associations (IPAs)
Number of medical groups/IPAs	3 contracted
Number of hospitals	10 contracted
Number of physicians	1,597 contracted

COMPENSATION METHODS

Physicians—primary care (ranked by method)	Fee-For-Service
Physicians—specialty (ranked by method)	Fee-For-Service
Hospitals (ranked by payment type)	Capitation, Per Diem, Discounted Charges, Differential by Service Type, Case Rates

PLAN PRODUCTS**PRODUCTS CURRENTLY OFFERED**

Covered California (Individual Market)	HMO
Individual market	HMO
Covered California (SHOP)	HMO
Small group (2–50 employees)	HMO
Large group (50+ employees)	HMO
Medicare Advantage	HMO
Special Needs Plans (SNPs)	HMO
Active Choice	PPO

ANCILLARY PRODUCTS

Vision	HMO
Prescription Drugs	HMO
Durable Medical Equipment	HMO
Rehabilitation	HMO

CALIFORNIA OFFICE LOCATIONS

Glendale
Irvine
Pleasant Hill
San Francisco
San Diego
Visalia
Walnut Creek
Westlake Village

EXECUTIVE OFFICERS

Peter B. Welch
President, Northern CA

Gene Rapisardi
President, Southern CA

Anand Raghavan
CFO

Jennifer Gutzmore
*Regional Medical
Executive*

Maricel Del Rosario, R.N.
Director of Health Services

Zula Saunders
*Quality Improvement
Director*

Michelle Demonteverde
*Regional Vice President,
Network Management*

Scott Hamilton
*Vice President,
Network Management,
Northern California*

Teri Lauenstein
*Vice President,
Network Management,
Southern California*

Karen Baker
Claims Manager

Kathy O'Neal
*Customer Service
Manager*

William S. Jameson
Chief Counsel

PRIMARY CONTACTS

Crystal Jack
Government Relations
(925) 906-8216

Amy Szable
Public Affairs
(860) 902-6625

Cigna HealthCare of California, Inc.

400 N. Brand Boulevard, #400 • Glendale, CA 91203

Ph: (818) 500-6262 • Fax: (818) 500-6365 • www.cigna.com/healthcare

PLAN ORGANIZATION

Parent Company/Affiliates HealthSource, Inc./Cigna Dental Health of CA, Inc.,
Cigna Behavioral Health of CA, Inc. (CBH),
Cigna Health & Life Insurance Company (CHLIC)

Recent mergers or acquisitions within California None

Year founded 1929

Year licensed 1979

Tax status For profit

Number of employees In California, we have 1,646 active employees

Health Plan Enrollment 981,231 total members

172,543 California HMO and POS

808,688 California PPO and Open Access Plus

PLAN-PROVIDER ARRANGEMENTS

Model types (ranked in descending order) Network of Medical Groups and IPAs,
Direct Contracting with Physicians

Number of medical groups/IPAs 263 HMO

Number of hospitals 359 PPO; 359 OAP; 340 HMO

Number of physicians 69,437 PPO; 69,445 OAP; 68,757 HMO

COMPENSATION METHODS

Physicians—primary care (ranked by method) Group Capitation, Fee-For-Service including bonus;
Source: Contracting

Physicians—specialty (ranked by method) Group Capitation, Fee-For-Service including bonus;
Source: Contracting

Hospitals (ranked by payment type) Per Diem, Capitation, Case Rates, Discounted Charges,
Diagnosis-Related Group, and Other (Hospital
Collaborative Care program); *Source: Contracting*

PLAN PRODUCTS

PRODUCTS CURRENTLY OFFERED

Individual market OAP, EPO

Small group (2–50 employees) OAP, PPO

Large group (50+ employees) HMO, POS, OA, OAP, PPO

Medicare Advantage None

Medigap (Supplemental Insurance) None

Special Needs Plans (SNPs) None

Medicare Part D stand-alone Medicare Part D

Access for Infants and Mothers None

Medi-Cal Managed Care None

Healthy Kids None

Major Risk Medical Insurance/GIP None

Other None

ANCILLARY PRODUCTS

Vision HMO, POS, OA, OAP, PPO

Chiropractic HMO, POS, OAP, PPO

Dental Cigna Dental HMO & PPO

Prescription Drugs HMO, POS, OAP, PPO

Long Term Health Care CHLIC

Life Insurance CHLIC

Accidental Death & Dismemberment CHLIC

Acupuncture HMO, POS, OAP, PPO

Substance Abuse CBH

Massage Therapy HMO, POS, OAP, PPO

Durable Medical Equipment HMO, POS, OAP, PPO

Rehabilitation HMO, POS, OAP, PPO

Workers' Compensation CHLIC

Other International

Community Care Health Plan

7370 N. Palm Ave., Suite 103 • Fresno, CA 93711
Ph: (559)228-5400 • www.communitycarehealth.org

EXECUTIVE OFFICERS

Aldo De La Torre

EXECUTIVE STAFF

Daniel Bluestone, M.D.

Jennifer Lorge

Simran Sidhu

PRIMARY CONTACT

Jennifer Lorge
Regulatory Affairs
(559) 387-1152

PLAN ORGANIZATION

Parent Company/Affiliate Fresno Community Medical Centers
Recent mergers or acquisitions within California None
Year founded 2010
Year licensed 2013
Tax status For Profit
Number of employees N/A
Health Plan Enrollment 7,450

PLAN-PROVIDER ARRANGEMENTS

Model types (ranked in descending order) Shared Risk
Number of Medical Groups/IPAs 0 owned, 1 contracted
Number of hospitals 4 owned, 0 contracted
Number of physicians 0 owned, 1488 contracted
Number of other licensed clinicians 0 owned, 16 contracted
Number of provider offices 0 owned, 174 contracted

COMPENSATION METHODS

Physicians – primary care (ranked by method) Capitation, Fee-For-Service
Physicians – specialty (ranked by method) Capitation, Cap Pool, Fee-For-Service
Hospitals (ranked by payment type) Fee-For-Service

PLAN PRODUCTS

PRODUCTS CURRENTLY OFFERED

Covered California (Individual Market) None
Individual market None
Small group (2–50 employees) None
Large group (50+ employees) HMO
Medicare Advantage None
Medi-Cal Managed Care None
Medigap (Supplemental Insurance) None
Special Needs Plans (SNPs) None
Medicare Part D stand-alone None
Access for Infants and Mothers None
Healthy Kids None
Major Risk Medical Insurance/GIP None
Other None

ANCILLARY PRODUCTS

Vision None
Chiropractic None
Dental None
Prescription Drugs None
Long Term Health Care None
Life Insurance None
Accidental Death & Dismemberment None
Acupuncture None
Substance Abuse None
Massage Therapy None
Durable Medical Equipment None
Rehabilitation None
Workers' Compensation None
Other (please specify) None

EXECUTIVE OFFICERS

Norma Diaz
Chief Executive Officer

Scott Carroll
Chief Financial Officer

Allan Sombillo
Chief Information Officer

Edward Hutt, MD, MBA
Chief Medical Officer

Ann Warren
Chief Regulatory Officer

EXECUTIVE STAFF

Andrew D. Gregor, J.D.
Chief Legal Counsel

Honest Dang, PharmD, CSP
Director of Pharmacy

Nora Pintado
Director of Claims

David Ritchie
*Director of Contract
Administration*

PRIMARY CONTACT

Ann Warren
(619) 498-6516

Community Health Group

2420 Fenton Street, Suite 100 • Chula Vista, CA 91914

Ph: (619) 422-0422 • Fax: (619) 422-5930 • www.chgsd.com

PLAN ORGANIZATION

Parent Company/Affiliate	None
Recent mergers or acquisitions within California	None
Year founded	1982
Year licensed	1985
Tax status	Non profit
Number of employees (full time/part time)	274 full time, 4 part time
Health Plan Enrollment	283,324

PLAN-PROVIDER ARRANGEMENTS

Model types (ranked in descending order)	Network of Medical Groups and IPAs, Direct Contracts with Physicians
Number of medical groups/IPAs	0 owned, 23 contracted
Number of hospitals	0 owned, 26 contracted
Number of physicians	0 owned, 3,356 contracted
Number of other licensed clinicians	0 owned, 1,397 contracted
Number of provider offices	0 owned, 605 contracted (pcp)

COMPENSATION METHODS

Physicians—primary care (ranked by method)	Individual Capitation, Group Capitation, Fee-For-Service
Physicians—specialty (ranked by method)	Fee-For-Service
Hospitals (ranked by payment type)	DRG, Discounted Charges, Per Diem

PLAN PRODUCTS

PRODUCTS CURRENTLY OFFERED

Individual market	None
Small group (2–50 employees)	None
Large group (50+ employees)	None
Medicare Advantage	None
Medigap (Supplemental Insurance)	None
Special Needs Plans (SNPs)	None
Medicare Part D stand-alone	None
Access for Infants and Mothers	None
Medi-Cal Managed Care	HMO
Healthy Kids	None
Major Risk Medical Insurance/GIP	None
Other	Cal MediConnect

ANCILLARY PRODUCTS

Vision	None
Chiropractic	None
Dental	None
Prescription Drugs	None
Long Term Health Care	None
Life Insurance	None
Accidental Death & Dismemberment	None
Acupuncture	None
Substance Abuse	None
Massage Therapy	None
Durable Medical Equipment	None
Rehabilitation	None
Workers' Compensation	None
Other	None

Contra Costa Health Plan (Contra Costa County Medical Services)

595 Center Avenue, Suite 100 • Martinez, CA 94553

Ph: (925) 313-6000 • Fax: (925) 313-6002 • www.contracostahealthplan.org

EXECUTIVE OFFICERS

Patricia Tanquary,
MSSW, MPH, Ph.D.
CEO

Patrick Godley
CFO

David J. Runt
CIO

EXECUTIVE STAFF

James Tysell, M.D.
Medical Director

Frank Lee, J.D.
Chief Legal Counsel

Wendy Mailer
*Marketing, Sales and
Outreach Manager*

Andrew Haydon, PharmD
Pharmacy Director

Sharron Mackey
Chief Operations Officer

Terri Lieder
*Director of Provider Relations,
Contracts, and Credentialing*

Kevin Drury
*Director of
Quality Management*

Rajiv Pramanik, M.D.
Chief Medical Informatics Officer

John Barclay, R.N.
*Director of Home and
Community Based Service,
Good Health and Case
Management*

Sonja Robinson, BSN,
MBA/MHA, Ph.D.
Utilization Manager Consultant

PRIMARY CONTACTS

Frank Lee, J.D.
Government Relations
(925) 313-6082

Judi Louro
Public Affairs
(925) 313-6000

PLAN ORGANIZATION

Parent Company/Affiliate	Division of Contra Costa County Health Services Dept.
Recent mergers or acquisitions within California	None
Year founded	1973
Year licensed	1973
Tax status	Non profit
Number of employees	225
Health Plan Enrollment	199,148

PLAN-PROVIDER ARRANGEMENTS

Model types (ranked in descending order)	Staff, Direct Contracting with Physicians
Number of hospitals	1 owned, 8 contracted
Number of physicians	0 owned, 2,557 contracted
Number of other licensed clinicians	0 owned, 824 contracted
Number of provider offices	10 owned, 504 contracted

COMPENSATION METHODS

Physicians—primary care (ranked by method).	Fee-For-Service, Salary
Physicians—specialty (ranked by method).	Fee-For-Service, Salary
Hospitals (ranked by payment type)	Per Diem, Diagnosis-Related Group

PLAN PRODUCTS

PRODUCTS CURRENTLY OFFERED

Covered California (Individual Market)	None
Small group (2–50 employees)	None
Large group (50+ employees)	HMO
Medicare Advantage	None
Medigap (Supplemental Insurance)	None
Special Needs Plans (SNPs)	None
Medicare Part D stand-alone	None
Access for Infants and Mothers	None
Medi-Cal Managed Care	HMO
Healthy Kids	None
Major Risk Medical Insurance/GIP	None
Other	Commercial: In-Home Support Service Workers: HMO Public: Basic Health Care – County Indigent Program, plus Pharmacy-Only Program, Medicare Cost Plan

ANCILLARY PRODUCTS

Vision	HMO
Chiropractic	HMO
Dental	HMO
Prescription Drugs	HMO
Long Term Health Care	None
Life Insurance	None
Accidental Death & Dismemberment	None
Acupuncture	HMO
Substance Abuse	HMO
Massage Therapy	None
Durable Medical Equipment	HMO
Rehabilitation	HMO
Workers' Compensation	None
Other	None

EXECUTIVE OFFICERS

Karen Johnson
COO

Mike Polen
Executive Vice President
Medicare and Operations

EXECUTIVE STAFF

Halima Bascus
Vice President
Field Health Services

Emmalou Torres-Cabrera
Director
Quality Improvement

Eric Campbell
Interim Director
Regulatory Compliance

Elizabeth Dang
Director
State Pharmacy

Daniel Dugger
Director
Network Management

Elizabeth Gianini
Director
State Government Affairs

Koh Kerdri
Vice President
I.T., QA, & Compliance

Rachael Rudd
Sr. Director
State Operations

Iren Spivak
Director
Case Management

Truong-Son Vinh
Director
Finance

PRIMARY CONTACTS

Karen Johnson
COO
(866) 999-3945

Elizabeth Gianini
Director
State Government Affairs
(714) 269-5190

Easy Choice, A WellCare Company

10803 Hope St., Suite B • Cypress CA 90630

Ph: (866) 999-3945 • Fax: (877) 999-3945 • www.easychoicehealthplan.com

PLAN ORGANIZATION

Parent Company/Affiliate WellCare Health Plans, Inc.
Recent mergers or acquisitions within California None
Year founded 2006
Year licensed 2007
Tax status For profit
Number of employees 128
Health Plan Enrollment 24,076

PLAN-PROVIDER ARRANGEMENTS

Model types (ranked in descending order) Delegated IPA
Number of Medical Groups/IPAs 41 contracted
Number of hospitals 141 contracted
Number of physicians 11,099 contracted
Number of other licensed clinicians 1,437 contracted
Number of provider offices 11,099 contracted

COMPENSATION METHODS

Physicians – primary care (ranked by method) 3,684 Capitated
Physicians – specialty (ranked by method) 7,415 Fee-For-Service
Hospitals (ranked by payment type) 141 Fee-For-Service contracts;
11 Capitated

PLAN PRODUCTS

PRODUCTS CURRENTLY OFFERED

Individual market None
Small group (2–50 employees) None
Large group (50+ employees) None
Medicare Advantage Yes
Medi-Cal Managed Care None
Medigap (Supplemental Insurance) None
Special Needs Plans (SNPs) Yes
Medicare Part D stand-alone None
Access for Infants and Mothers None
Healthy Kids None
Major Risk Medical Insurance/GIP None
Other None

ANCILLARY PRODUCTS

Vision HMO
Chiropractic HMO
Dental HMO
Prescription Drugs HMO
Long Term Health Care None
Life Insurance None
Accidental Death & Dismemberment None
Acupuncture HMO
Substance Abuse HMO
Massage Therapy None
Durable Medical Equipment HMO
Rehabilitation HMO
Workers' Compensation None
Other (please specify) Transportation

Gold Coast Health Plan (Ventura County Medi-Cal Managed Care Commission)

711 Daily Drive, Suite 106 • Camarillo, CA 93010

Ph: (888) 301-1228 • Fax: (805) 437-5132 • www.goldcoasthealthplan.org

EXECUTIVE OFFICERS

Dale Villani

Chief Executive Officer

C. Albert Reeves, MD

Chief Medical Officer

Ruth Watson

Chief Operations Officer

Patricia Mowlavi

Chief Financial Officer

Melissa Scrymgeour

Chief Information Officer

Nancy R. Wharfield, MD

Associate Chief

Medical Officer

Ralph Oyaga

*Executive Director,
Governmental Regulatory
and External Relations*

Brandy Armenta

*Compliance Officer/
Director*

PRIMARY CONTACTS

Ralph Oyaga

*Executive Director,
Governmental Regulatory
and External Relations
(805) 437-5533*

Steven Lalich

*Director of Marketing
and Communications
(805) 437-5514*

PLAN ORGANIZATION

Parent Company/Affiliate None

Recent mergers or acquisitions within California None

Year founded July 1, 2011

Tax status Non profit

Number of employees 174

Health Plan Enrollment 206,251 as of December 2016

PLAN-PROVIDER ARRANGEMENTS

Model types (ranked in descending order)

Number of Medical Groups/IPAs 3 contracted

Number of hospitals 8

Number of physicians 1,418

Number of other licensed clinicians 149

COMPENSATION METHODS

Physicians – primary care (ranked by method) CAP/FFS

Physicians – specialty (ranked by method) FFS/CAP

Hospitals (ranked by payment type) Per Diem

PLAN PRODUCTS

PRODUCTS CURRENTLY OFFERED

Individual market None

Small group (2–50 employees) None

Large group (50+ employees) None

Medicare Advantage None

Medi-Cal Managed Care Yes

Medigap (Supplemental Insurance) None

Special Needs Plans (SNPs) None

Medicare Part D stand-alone None

Access for Infants and Mothers None

Healthy Kids None

Major Risk Medical Insurance/GIP None

ANCILLARY PRODUCTS

Vision Yes

Chiropractic Yes

Dental Denti-Cal

Prescription Drugs Yes

Long Term Health Care Yes

Life Insurance None

Accidental Death & Dismemberment None

Acupuncture None

Substance Abuse Carve Out

Massage Therapy None

Durable Medical Equipment Yes

Rehabilitation Yes

Workers' Compensation None

Other Behavioral Health

**CALIFORNIA
OFFICE LOCATIONS**

Bakersfield, Chatsworth,
Fresno, Huntington Beach,
Modesto, Oakland,
Pasadena, Rancho Cordova,
San Bernardino, San Diego,
San Jose, San Rafael,
Stockton, Woodland Hills

EXECUTIVE OFFICER

Steven Sell
CEO and Plan President

EXECUTIVE STAFF

Carol Aroyan
*Health Plan Development and
Contracting Officer*

Patricia Clarey
*Chief State Health Programs and
Regulatory Relations Officer*

Jennifer Fortin
*Staff VP, Product Management
and Commercial Solutions*

Eric Hause
*VP, Strategy and
Business Development*

Susan Hill
VP, Strategy and Execution

Joan Kmotorka
*VP, Program and
Portfolio Management*

Arthur Kummer
*Medicare Programs and
Consumer Operations Officer*

Jennifer A. Moore
Commercial Officer

Gary Neiman
Chief Customer Experience Officer

Pierre Pendergrass
VP and Deputy General Counsel

Martha Santana-Chin
*Provider Engagement and
Innovation Officer*

Douglas Schur
VP and Deputy General Counsel

Brian Tweten
Chief Financial Officer

PRIMARY CONTACTS

Dan Chick
Government Relations
(916) 552-5285

Brad Kieffer
Communications
(818) 676-6833

Health Net

21281 Burbank Blvd. • Woodland Hills, CA 91367
Ph: (818) 676-6775 • Fax: (818) 676-6992 • www.healthnet.com

PLAN ORGANIZATION

Parent Company/Affiliate Centene Corp.
Recent mergers or acquisitions within California None
Year founded 1979
Year licensed 1979
Tax status For profit
Number of employees 3,000
Health Plan Enrollment 2.8 million

PLAN-PROVIDER ARRANGEMENTS

Model types (ranked in descending order) Network of Medical Groups or IPAs,
Direct Contracting with Physicians
Number of medical groups/IPAs 0 owned, 166 contracted
Number of hospitals 0 owned, 315 contracted
Number of physicians 0 owned, 68,000 contracted

COMPENSATION METHODS

Physicians—primary care (ranked by method) Group Capitation, Other (RBRVS),
Lesser of: Percent of Charges, Fee Schedule
Physicians—specialty (ranked by method) Group Capitation, Other (RBRVS),
Lesser of: Percent of Charges, Fee Schedule
Hospitals (ranked by payment type) Per Diem, Capitation, Discounted Charges,
Lesser of: Percent of Charges, Fee Schedule, DRG

PLAN PRODUCTS

PRODUCTS CURRENTLY OFFERED

Covered California (Individual Market) HMO, EPO, HSP
Individual market HMO, PPO, EPO, HSP
Covered California (SHOP) PPO, EPO
Small group (2–100 employees) HMO, PPO, EPO, HSP
Large group (100+ employees) HMO, PPO, POS, EPO, Indemnity
Medicare Advantage HMO
Medigap (Supplemental Insurance) Medicare Supplement
Special Needs Plans (SNPs) HMO
Medi-Cal Managed Care HMO
Major Risk Medical Insurance/GIP None
Other EAP (through MHN)

ANCILLARY PRODUCTS

Vision HMO, PPO, Medicare Advantage, Medicare Supplement
Chiropractic HMO, PPO, POS, EPO, HSP, Medicare Advantage
Dental HMO, PPO, Indemnity, Medicare Advantage,
Medicare Supplement
Prescription Drugs HMO, PPO, POS, Medicare Advantage
Long Term Health Care None
Life Insurance Group Term Life
Accidental Death & Dismemberment In combination with Group Term Life
Acupuncture HMO, PPO, POS, EPO, HSP, Medicare Advantage
Substance Abuse HMO, PPO, POS, EPO, HSP, Medicare Advantage
Durable Medical Equipment HMO, PPO, POS, EPO, HSP, Medicare Advantage
Rehabilitation HMO, PPO, POS, EPO, HSP, Medicare Advantage
Workers' Compensation None

Health Plan of San Joaquin (San Joaquin County Health Commission)

7751 S. Mantney Road • French Camp, CA 95231

1025 J Street • Modesto, CA 95354

Ph: (209) 942-6300 • Fax: (209) 942-6305 • www.hpsj.com

EXECUTIVE STAFF

Amy Y. Shin
Chief Executive Officer

Michelle Tetreault
Chief Financial Officer

Lakshmi Dhanvanthari, MD
Chief Medical Officer

Cheron Vail
Chief Information Officer

David Hurst
*Vice President,
External Affairs*

Alejandra Clyde
Compliance/Privacy Officer

Pamela Newman
*Vice President,
Provider Networks*

Marc Radner
*Vice President,
Human Resources*

PRIMARY CONTACTS

Alejandra Clyde
Government Relations
(209) 461-2265

David Hurst
Public Affairs
(209) 461-2241

PLAN ORGANIZATION

Parent Company/Affiliate	None
Recent mergers or acquisitions within California	None
Year founded	1995
Year licensed	1996
Tax status	Non profit
Number of employees	282 full time
Health Plan Enrollment	341,424

PLAN-PROVIDER ARRANGEMENTS

Model types (ranked in descending order)	Direct Contracting with Physicians, Network of Medical Groups and IPAs
Number of medical groups/IPAs	0 owned, 34 contracted
Number of hospitals	0 owned, 20 contracted
Number of physicians	0 owned, 1,393 (367 PCPs + 1,026 specialists)

COMPENSATION METHODS

Physicians—primary care (ranked by method)	Individual Capitation, Group Capitation
Physicians—specialty (ranked by method)	Fee-For-Service, Group Capitation
Hospitals (ranked by payment type)	Per Diem — APR — DRG

PLAN PRODUCTS

PRODUCTS CURRENTLY OFFERED

Individual market	None
Small group (2–50 employees)	None
Large group (50+ employees)	None
Medicare Advantage	None
Medigap (Supplemental Insurance)	None
Special Needs Plans (SNPs)	None
Medicare Part D stand-alone	None
Access for Infants and Mothers	HMO
Medi-Cal Managed Care	HMO
Healthy Kids	None
Major Risk Medical Insurance/GIP	None
Other	None

ANCILLARY PRODUCTS

Vision	None
Chiropractic	None
Dental	None
Prescription Drugs	None
Long Term Health Care	None
Life Insurance	None
Accidental Death & Dismemberment	None
Acupuncture	None
Substance Abuse	None
Massage Therapy	None
Durable Medical Equipment	None
Rehabilitation	None
Workers' Compensation	None

EXECUTIVE OFFICER

Maya Altman
Chief Executive Officer

EXECUTIVE STAFF

Ron Robinson
Chief Financial Officer

Ian Johansson
Chief Compliance Officer

Margaret Beed, M.D.
Chief Medical Officer

Edward Ortiz
Chief Network Officer

Eben Yong
Chief Information Officer

Chris Baughman
Chief Performance Officer

Vicki Simpson
Chief Human
Resources Officer

Khoa Nguyen
Chief Strategy Officer

PRIMARY CONTACT

Ian Johansson
Chief Compliance Officer
(650) 616-0050

Health Plan of San Mateo (San Mateo Health Commission)

801 Gateway Blvd, Suite 100 • So. San Francisco, CA 94080

Ph: (650) 616-0050 • Fax: (650) 616-0060 • www.hpsm.org

PLAN ORGANIZATION

Parent Company/Affiliate	None
Recent mergers or acquisitions within California	None
Year founded	1986
Year licensed	1987
Tax status	Non profit
Number of employees	263 full time, 2 part time
Health Plan Enrollment	147,443

PLAN-PROVIDER ARRANGEMENTS

Model types (ranked in descending order)	Network of Medical Groups and IPAs, Direct Contracting with Physicians
Number of hospitals	0 owned, 11 contracted
Number of physicians	0 owned, 4,816 contracted
Number of provider offices	0 owned, 396 contracted

COMPENSATION METHODS

Physicians—primary care (ranked by method)	Fee-For-Service and Capitation, depending on line of business
Physicians—specialty (ranked by method)	Fee-For-Service
Hospitals (ranked by payment type)	DRG, APC, Per Diem, and Fee-For-Service, depending on hospital and line of business

PLAN PRODUCTS**PRODUCTS CURRENTLY OFFERED**

Individual market	None
Small group (2–50 employees)	None
Large group (50+ employees)	None
Medicare Advantage	None
Medigap (Supplemental Insurance)	None
Medicare-Medicaid Plan	HMO
Medicare Part D stand-alone	None
Access for Infants and Mothers	None
Medi-Cal Managed Care	HMO
Healthy Kids	HMO
Major Risk Medical Insurance/GIP	None
Other	Public: In-Home Supportive Service Workers in San Mateo: HMO Third Party Administrator for County Indigent Programs

ANCILLARY PRODUCTS

Vision	HMO
Chiropractic	HMO
Dental	HMO
Prescription Drugs	HMO
Long-term Health Care	HMO
Life Insurance	None
Accidental Death & Dismemberment	None
Acupuncture	HMO
Substance Abuse	HMO
Massage Therapy	None
Durable Medical Equipment	HMO
Rehabilitation	HMO
Workers' Compensation	None
Other	None

EXECUTIVE OFFICERS

Richard N. Merkin, M.D.
President

S. Ian Drew, M.D.
Medical Director

Jaya Kurian
CFO

Rich Lipeles
COO

EXECUTIVE STAFF

Scott Bae
Information Technology

PRIMARY CONTACTS

Jaya Kurian
Government Relations
(818) 654-3461

Ann Wymer
(310) 823-5250

Rich Lipeles
Public Affairs
(714) 908-5613

Heritage Provider Network

8510 Balboa Boulevard, Suite 285 • Northridge, CA 91325

Ph: (818) 654-3461 • Fax: (818) 654-3460 • www.heritageprovidernetwork.com

PLAN ORGANIZATION

Parent Company/Affiliate	None
Recent mergers or acquisitions within California	0
Year founded	1996
Year licensed	1997
Tax status	For profit
Number of employees	3,601 full time
Health Plan Enrollment	N/A

PLAN-PROVIDER ARRANGEMENTS

Model types (ranked in descending order)	Network of Medical Groups and IPAs, Direct Contracting with Physicians
Number of medical groups	9 owned, 0 contracted
Number of IPAs	9 owned, 2 contracted
Number of hospitals	117 contracted
Number of PCP, Specialists	2,748 PCPs, 6,731 Specialists
Number of physicians	276 owned (salaried)
Number of provider offices	83 contracted

COMPENSATION METHODS

Physicians-primary care (ranked by method)	Other (Fee schedule), Group Capitation, Individual Capitation, Salary
Physicians-specialty (ranked by method)	Other (Fee schedule), Group Capitation
Hospitals (ranked by payment type)	Per Diem, Case Rates, Discount Charges

PLAN PRODUCTS

PRODUCTS CURRENTLY SERVED

Individual market	HMO, PPO
Small group (2-50 employees) enrollment	HMO
Large group (50+ employees) enrollment	HMO, POS
Medicare Advantage	HMO, Supplemental, FFS
Medi-Cal Managed Care	HMO, FFS
Medigap (Supplemental Insurance)	None
Special Needs Plans (SNPs)	HMO
Medicare Part D stand-alone	None
Access for Infants and Mothers	None
Healthy Kids	HMO
Major Risk Medical Insurance/GIP	PPO, FFS
Other	None

ANCILLARY PRODUCTS

Vision	None
Chiropractic	None
Dental	None
Prescription Drugs	None
Long Term Health Care	None
Life Insurance	None
Accidental Death & Dismemberment	None
Acupuncture	None
Substance Abuse	None
Massage Therapy	None
Durable Medical Equipment	None
Rehabilitation	None
Workers' Compensation	FFS Contract
Other	Industrial Physical, Champus

EXECUTIVE OFFICER

Bradley P. Gilbert, M.D., M.P.P.
Chief Executive Officer

EXECUTIVE STAFF

Rohan Reid
Executive Officer

Susan Arcidiacono
Chief Marketing Officer

Kurt Hubler
Chief Network Officer

Keenan Freeman
Chief Financial Officer

Jennifer Sayles, M.D., M.P.H.
Chief Medical Officer

**Marcia Anderson,
 BSN, RN, CCM, CDMS**
Chief of Medical Services

Michael Deering
Chief Information Officer

Janet Nix
*Chief of Organizational
 Development*

Steve Sohn, Esq.
Legal Counsel

PRIMARY CONTACT

Bradley P. Gilbert, M.D., M.P.P.
*Government Relations/
 Public Affairs*
 (909) 890-2010

Inland Empire Health Plan

10801 Sixth Street, Suite 120 • Rancho Cucamonga, CA 91730

Ph: (909) 890-2000 • Fax: (909) 890-2019 • www.iehnp.org

PLAN ORGANIZATION

Parent Company/Affiliate None
 Recent mergers or acquisitions within California None
 Year founded 1994
 Year licensed 1996
 Tax status Not-for-profit
 Number of employees 1,770 as of 9/30/2016
 Health Plan Enrollment 1,241,541 as of 9/30/2016

PLAN-PROVIDER ARRANGEMENTS

Model types (ranked in descending order) Network of IPAs and Direct Physician Contracting
 Number of medical groups/IPAs 18 contracted
 Number of hospitals 37 contracted
 Number of physicians 3,584 contracted
 Number of other licensed clinicians 1,629 contracted
 Number of provider offices 8,273 contracted

COMPENSATION METHODS

Physicians—primary care (ranked by method) Individual Capitation, Fee-For-Service
 Physicians—specialty (ranked by method) Fee-For-Service
 Hospitals (ranked by payment type) Per Diem, Diagnosis-Related Group

PLAN PRODUCTS**PRODUCTS CURRENTLY OFFERED**

Individual market None
 Small group (2–50 employees) None
 Large group (50+ employees) None
 Medicare Advantage None
 Medigap (Supplemental Insurance) None
 Special Needs Plans (SNPs) HMO
 Medicare Part D stand-alone None
 Access for Infants and Mothers None
 Medi-Cal Managed Care HMO
 Major Risk Medical Insurance/GIP None
 Other None

ANCILLARY PRODUCTS

Vision None
 Chiropractic None
 Dental None
 Prescription Drugs None
 Long Term Health Care None
 Life Insurance None
 Accidental Death & Dismemberment None
 Acupuncture None
 Substance Abuse None
 Massage Therapy None
 Durable Medical Equipment None
 Rehabilitation None
 Workers' Compensation None
 Other None

EXECUTIVE OFFICERS

Ronald H. Bolding
CEO

Paul Biberkraut
CFO

EXECUTIVE STAFF

Susan Tenorio, R.N.
*Vice President
Health Operations*

Ken Smith, M.D.
Chief Medical Officer

Cyndie O'Brien
*Vice President
Sales and Marketing*

Larry Baca
Sales Director

Michelle Hageman
Provider Relations

Jill Young
Member Relations

Bill Chen
IT Director

PRIMARY CONTACTS

Gail Blacklock
Government Relations
(909) 623-6333

Cyndie O'Brien
Public Affairs
(909) 623-6333

Inter Valley Health Plan

300 South Park Avenue • Pomona, CA 91769-6002

Ph: (909) 623-6333 • Fax: (909) 397-9039 • www.ivhp.com

PLAN ORGANIZATION

Parent Company/Affiliate None
Recent mergers or acquisitions within California None
Year founded 1979
Year licensed 1979
Tax status Non profit
Number of employees 120 full time
Health Plan Enrollment 25,000 (Medicare Only)

PLAN-PROVIDER ARRANGEMENTS

Model types (ranked in descending order) Network of Medical Groups and IPAs
Number of medical groups/IPAs 0 owned, 14 contracted
Number of hospitals 0 owned, 50 contracted

COMPENSATION METHODS

Physicians—primary care (ranked by method) Group Capitation
Hospitals (ranked by payment type) Capitation, Per Diem

PLAN PRODUCTS

PRODUCTS CURRENTLY OFFERED

Medicare Advantage HMO

ANCILLARY PRODUCTS

Vision Yes
Chiropractic Yes
Dental Yes
Prescription Drugs Yes
Substance Abuse Yes
Durable Medical Equipment Yes
Rehabilitation Yes

CALIFORNIA OFFICE LOCATIONS

See website for most updated list
of all office locations. www.kp.org

EXECUTIVE OFFICERS

Bernard J. Tyson
Chairman and National CEO

Gregory A. Adams
Group President

Janet Liang
*Regional President,
Northern California*

Julie Miller-Phipps
*Regional President,
Southern California*

Vanessa Benavides
*Senior Vice President,
Chief Compliance and Privacy Officer*

Wade Overgaard
*Senior Vice President,
California Health Plan Operations*

Kathryn Lancaster
*Executive Vice President and
National Chief Financial Officer*

Michael D. Rowe
*Chief Financial Officer and
Senior Vice President of Finance,
Northern California*

George A. Disalvo
*Senior Vice President and Chief
Financial Officer, Southern California*

Richard Daniels
*Executive Vice President and
Chief Information Officer*

Charles E. Columbus
*Senior Vice President
Chief Human Resources Officer*

Paul M. Swenson
*Senior Vice President
Chief Strategy Officer*

Robert M. Pearl, M.D.
*Executive Medical Director and CEO,
Northern California*

Edward M. Ellison, M.D.
*Executive Medical Director and Chairman
of the Board, Southern California*

Sandra Golze
*VP and Regional Counsel,
Northern California*

John Yamamoto
*Vice President and Assistant General
Counsel, Southern California*

Christine Paige
*Senior Vice President,
Marketing and Internet Services*

Alan T. Kiyohara, Pharm.D.
*VP Pharmacy Operations and Services,
Southern California*

Karen Tokunaga, Pharm.D.
*Interim VP Pharmacy Operations
and Services, Northern California*

PRIMARY CONTACTS

John Garcia
*Vice President Legal and Government
Relations, Northern California*
(916) 448-3209

Yvette Radford
*Vice President External and Community
Affairs, Northern California*
(510) 987-4190

Diana Halper
*Vice President, Communications and
Media Services, Southern California*
(626) 405-5890

Debby Cunningham
*SVP Strategy and Business
Development, Northern California*
(510) 987-3995

Deborah Espinal
*Executive Director of Policy,
Health Plan Regulatory Services*
(510) 393-6574

Lisa Koltun
*Vice President, Health Plan
Regulatory Services*
(510) 625-7028

Kaiser Permanente (Kaiser Foundation Health Plan, Inc.)

Northern California Region • 1950 Franklin Street, 20th Floor • Oakland, CA 94612
Ph: (510) 987-1000 • Fax: (510) 987-4303

Southern California Region • 393 East Walnut Street • Pasadena, CA 91188
Ph: (626) 405-5000 • Fax: (626) 405-2583

www.kaiserpermanente.org

PLAN ORGANIZATION

Parent Company	None
Recent mergers or acquisitions within California	None
Year founded	1945
Year licensed	1977
Tax status	Non profit
Number of employees	144,293
Health Plan Enrollment	10,431,222 Nationally 3,893,081 Northern California 4,165,291 Southern California

PLAN-PROVIDER ARRANGEMENTS

Model types (ranked in descending order)	Group Model HMO
Number of medical groups/IPAs	0 owned, 2 exclusive contracts (TPMG, SCPMG)
Number of hospitals	35 owned, 10 Plan contracted
Number of physicians	18,359 TPMG & SCPMG, 2,578 contracted
Number of other licensed clinicians	6,869 TPMG & SCPMG, 1,194 contracted

COMPENSATION METHODS

Physicians—primary care (ranked by method)	Group Capitation
Physicians—specialty (ranked by method)	Group Capitation
Hospitals (ranked by payment type)	Cost Reimbursement (Kaiser) Discounted Charges, Per Diem, Case Rates (non-Kaiser)

PLAN PRODUCTS

PRODUCTS CURRENTLY OFFERED

Covered California (Individual Market)	HMO
Individual market	HMO, Other
Covered California (SHOP)	HMO, Other
Small group (2–50 employees)	HMO, PPO, Other
Large group (50+ employees)	HMO, POS, PPO, Other
Medicare Advantage	HMO (with and without Part D)
Special Needs Plans (SNPs)	HMO
Access for Infants and Mothers	HMO
Medi-Cal Managed Care	HMO
Major Risk Medical Insurance/GIP	HMO
Other	HMO

ANCILLARY PRODUCTS

Vision	HMO, PPO, POS
Chiropractic	HMO, PPO, POS
Dental	HMO, PPO, Other
Prescription Drugs	HMO, PPO, POS
Acupuncture	HMO, PPO, POS
Substance Abuse	HMO, PPO, POS
Durable Medical Equipment	HMO, PPO, POS
Rehabilitation	HMO, PPO, POS
Workers' Compensation	Injury Care and Occupational Health and Safety Services

EXECUTIVE OFFICERS

Douglas A. Hayward
President and CEO

Robert Landis
Chief Financial Officer

Alan Avery
Chief Operating Officer

Richard Pruitt
Chief Information Officer

Vacant
Chief Medical Officer

EXECUTIVE STAFF

Maria Macduff, M.D.
Medical Director

Irwin Harris, M.D.
Associate Medical Director

Deborah Murr, R.N.
*Administrative Director
of Health Services*

Louis Iturriria
*Director of Marketing and
Member Services*

Bruce Wearda, Pharm. D.
Director of Pharmacy

Anita Martin
Director of Human Resources

Carl R. Breining, CHC
*Director of Compliance and
Regulatory Affairs*

Emily Silva
Director of Provider Relations

Jeremy McGuire
*Director Government Affairs
and Business Development*

PRIMARY CONTACTS

Jeremy McGuire
Government Relations

Louis Iturriria
Public Affairs

Kern Family Health Care (Kern Health Systems)

9700 Stockdale Highway • Bakersfield, CA 93311

Ph: (661) 664-5000 • Fax: (661) 664-5178 • www.kernfamilyhealthcare.com

PLAN ORGANIZATION

Parent Company/Affiliate None
Recent mergers or acquisitions within California None
Year founded 1994
Year licensed 1996
Tax status Non profit
Number of employees 334 full time
Health Plan Enrollment 241,000 (Medi-Cal)

PLAN-PROVIDER ARRANGEMENTS

Number of hospitals 0 owned, 16 contracted
Number of physicians 0 owned, 778 contracted
Number of other licensed clinicians 0 owned, 293 contracted
Number of provider offices 0 owned, 362 contracted

COMPENSATION METHODS

Physicians—primary care (ranked by method) Fee-For-Service
Physicians—specialty (ranked by method) Fee-For-Service
Hospitals (ranked by payment type) Fee-For-Service

PLAN PRODUCTS

PRODUCTS CURRENTLY OFFERED

Individual market None
Small group (2–50 employees) None
Large group (50+ employees) None
Medicare Advantage None
Medigap (Supplemental Insurance) None
Special Needs Plans (SNPs) None
Medicare Part D stand-alone None
Access for Infants and Mothers None
Medi-Cal Managed Care HMO
Healthy Kids None
Major Risk Medical Insurance/GIP None
Other None

ANCILLARY PRODUCTS

Vision None
Chiropractic None
Dental None
Prescription Drugs None
Long Term Health Care None
Life Insurance None
Accidental Death & Dismemberment None
Acupuncture None
Substance Abuse None
Massage Therapy None
Durable Medical Equipment None
Rehabilitation None
Workers' Compensation None
Other None

EXECUTIVE OFFICERS

John Baackes
Chief Executive Officer
Richard Seidman, MD
Chief Medical Officer

Marie Montgomery
Chief Financial Officer

Dino Kasdagly
Chief Operations Office

Augustavia Haydel, Esq.
General Counsel

Robert Turner, PhD
Chief of Human Resources

Tom Schwaninger
Chief Information Officer

Noah Paley
*Chief of Enterprise
Integration*

Phinney Ahn
Chief of Staff

PRIMARY CONTACTS

Cherie Fields
Government Relations
(916) 930-0043

Francisco Oaxaca
Public Affairs
(213) 694-1250

L.A. Care Health Plan (Local Initiative Health Authority for Los Angeles County)

1055 W 7th Street, 10th Floor • Los Angeles, CA 90017

Ph: (213) 694-1250 • Fax: (213) 694-1246 • www.lacare.org

PLAN ORGANIZATION

Parent Company/Affiliate None
Recent mergers or acquisitions within California None
Year founded 1994
Year licensed 1997
Tax status Not-for-profit
Number of employees 2,000
Health Plan Enrollment 1,973,000

PLAN-PROVIDER ARRANGEMENTS

Model types (ranked in descending order) Network of Medical Groups and IPA's Plan
Partner/Delegated; Direct Contracting
with Physicians
Number of medical groups/IPAs 0 owned, 73 contracted
Number of hospitals 0 owned, 76 contracted
Number of other licensed clinicians 0 owned, 5,377 contracted
Number of physicians 0 owned, 12,722 contracted
Number of provider offices 0 owned, 6,149 contracted

COMPENSATION METHODS

Physicians—primary care (ranked by method) Group Capitation, Fee-For-Service
Physicians—specialty (ranked by method) Group Capitation, Fee-For-Service
Hospitals (ranked by payment type) Per Diem, Diagnosis Related Groups,
Capitation, Case Rates, Discount Charges,
Differential by Service Type

PLAN PRODUCTS

PRODUCTS CURRENTLY OFFERED

Covered California (Individual Market) HMO
Individual market None
Small group (2–50 employees) None
Large group (50+ employees) None
Medicare Advantage HMO
Medigap (Supplemental Insurance) None
Medicare Part D stand-alone None
Access for Infants and Mothers None
Medi-Cal Managed Care HMO
Major Risk Medical Insurance/GIP None
Other None

ANCILLARY PRODUCTS

Vision None
Chiropractic None
Dental None
Prescription Drugs None
Long Term Health Care None
Life Insurance None
Accidental Death & Dismemberment None
Acupuncture None
Substance Abuse None
Massage Therapy None
Durable Medical Equipment None
Rehabilitation None
Workers' Compensation None
Other None

CALIFORNIA OFFICE LOCATIONS

Sacramento
2180 Harvard Street,
Suite 500
Sacramento, CA 95815

Inland Empire
550 E. Hospitality Lane,
Suite 100
San Bernardino, CA 92408

San Diego
9275 Sky Park Court,
Suite 400
San Diego, CA 92123

El Centro
1607 W. Main Street
El Centro, CA 92243

EXECUTIVE OFFICERS

Deborah Miller
President

Yunkyung Kim
Plan Chief Operations Officer

Matthew Schueren
VP Finance & Analytics

James Cruz, MD
Chief Medical Officer

EXECUTIVE STAFF

Jennifer Rasmussen
VP Health Care Services

Mohit Ghose
VP Government Contracts

John Rosenthal, Esq.
Legal Counsel

PRIMARY CONTACTS

Mohit Ghose
VP Government Contracts
(562) 951-1562

Cameron Smyth
AVP State Affairs
(661) 505-2269

Molina Healthcare of California

200 Oceangate, Suite 100 • Long Beach, CA 90802

Ph: (800) 526-8196 • Fax: (562) 499-6170 • www.molinahealthcare.com

PLAN ORGANIZATION

Parent Company/Affiliate	Molina Healthcare, Inc.
Recent mergers or acquisitions within California	None
Year founded	1980
Year licensed	1994
Tax status	For profit
Number of employees	930 full time
Health Plan Enrollment	4,246,000 National 683,000 California

PLAN-PROVIDER ARRANGEMENTS

Model types (ranked in descending order)	Network of Medical Groups and IPAs, Direct Contracting with Physicians, Staff
Number of medical groups/IPAs	2 exclusive, 71 contracted
Number of hospitals	100 contracted
Number of physicians	20,207 contracted
Number of other licensed clinicians	2,245 contracted
Number of provider offices	19 exclusive, 16,659 contracted

COMPENSATION METHODS

Physicians—primary care (ranked by method)	Group Capitation, Individual Capitation, Salary, Fee-For-Service
Physicians—specialty (ranked by method)	Fee-For-Service, Capitation
Hospitals (ranked by payment type)	Per Diem, Capitation

PLAN PRODUCTS

PRODUCTS CURRENTLY OFFERED

Covered California (Individual Market)	HMO
Individual market	None
Small group (2–50 employees)	None
Large group (50+ employees)	None
Medicare Advantage	HMO
Medigap (Supplemental Insurance)	None
Special Needs Plans (SNPs)	HMO
Medicare Part D stand-alone	None
Medi-Cal Managed Care	HMO
Healthy Kids	None
Major Risk Medical Insurance/GIP	None

ANCILLARY PRODUCTS

Vision	None
Chiropractic	None
Dental	None
Prescription Drugs	None
Long Term Health Care	None
Life Insurance	None
Accidental Death & Dismemberment	None
Acupuncture	None
Substance Abuse	None
Massage Therapy	None
Durable Medical Equipment	None
Rehabilitation	None
Workers' Compensation	None

EXECUTIVE OFFICERS

Nancy Boerner, MD, MBA
CEO

Jay Cohen, MD, MBA
*Chairman Emeritus,
Board of Directors*

EXECUTIVE STAFF

Karen Goldstein
General Manager

PRIMARY CONTACT

Karen Goldstein
General Manager
(949) 923-3350

Monarch Health Plan, Inc.

11 Technology Drive • Irvine, CA 92618

Ph: (949) 923-3350 • Fax: (949) 923-3585 • www.monarchhealthplan.com

PLAN ORGANIZATION

Parent Company/Affiliate	Monarch Healthcare, A Medical Group, Inc.
Recent mergers or acquisitions within California	None
Year founded	2007
Year licensed	2007
Tax status	Profit
Number of employees	16 FTE's
Health Plan Enrollment	MHP takes global risk for other Health Plans' members

PLAN-PROVIDER ARRANGEMENTS

Model types (ranked in descending order)	Network of Medical Groups and Independent Practice Associations (IPAs)
Number of medical groups/IPAs	1 contracted
Number of hospitals	24 contracted
Number of physicians	None
Number of other licensed clinicians	None
Number of provider offices	None

COMPENSATION METHODS

Physicians – primary care (ranked by method)	None
Physicians – specialty (ranked by method)	None
Hospitals (ranked by payment type)	Diagnosis Related Group, Per Diem

PLAN PRODUCTS

PRODUCTS CURRENTLY OFFERED

Individual market	None
Small group (2–50 employees)	None
Large group (50+ employees)	None
Medicare Advantage	None
Medi-Cal Managed Care	None
Medigap (Supplemental Insurance)	None
Special Needs Plans (SNPs)	None
Medicare Part D stand-alone	None
Access for Infants and Mothers	None
Healthy Kids	None
Major Risk Medical Insurance/GIP	None
Other	MHP takes global risk for other Health Plans' members

ANCILLARY PRODUCTS

Vision	None
Chiropractic	None
Dental	None
Prescription Drugs	None
Long Term Health Care	None
Life Insurance	None
Accidental Death & Dismemberment	None
Acupuncture	None
Substance Abuse	None
Massage Therapy	None
Durable Medical Equipment	None
Rehabilitation	None
Workers' Compensation	None
Other (please specify)	None

EXECUTIVE OFFICERS

Grace Li
Chief Executive Officer

Gary Campanella
CFO

Jay Luxenberg, MD
Chief Medical Officer

David Nolan
Chief Operating Officer

Eileen Kunz
*Chief of Government
Affairs and Compliance*

PRIMARY CONTACTS

Eileen Kunz
Government Relations
(415) 292-8722

Roy Alojado
Public Affairs
(415) 292-8846

On Lok Lifeways (On Lok Senior Health Services)

1333 Bush Street • San Francisco, CA 94109

Ph: (415) 292-8888 • Fax: (415) 292-8745 • www.OnLok.org

PLAN ORGANIZATION

Parent Company/Affiliate On Lok, Inc.
Recent mergers or acquisitions within California None
Year founded 1971
Year licensed 1999
Tax status Non profit
Number of employees 450 full time, 250 part time
Health Plan Enrollment 1,460

PLAN-PROVIDER ARRANGEMENTS

Model types (ranked in descending order) Staff Model
Number of medical groups/IPAs 0 owned, 54 contracted
Number of hospitals 0 owned, 15 contracted
Number of physicians 20 employed, 360 contracted
Number of other licensed clinicians 0 owned, 50 contracted
Number of provider offices 9 owned, 180 contracted

COMPENSATION METHODS

Physicians—primary care (ranked by method) Employed
Physicians—specialty (ranked by method) Fee-For-Service
Hospitals (ranked by payment type) Fee-For-Service

PLAN PRODUCTS

PRODUCTS CURRENTLY OFFERED

Individual market None
Small group (2–50 employees) None
Large group (50+ employees) None
Medicare Advantage None
Medigap (Supplemental Insurance) None
Special Needs Plans (SNPs) None
Medicare Part D stand-alone None
Access for Infants and Mothers None
Medi-Cal Managed Care None
Healthy Kids None
Major Risk Medical Insurance/GIP None
Other PACE: HMO

ANCILLARY PRODUCTS

Vision None
Chiropractic None
Dental None
Prescription Drugs None
Long Term Health Care None
Life Insurance None
Accidental Death & Dismemberment None
Acupuncture None
Substance Abuse None
Massage Therapy None
Durable Medical Equipment None
Rehabilitation None
Workers' Compensation None
Other None

EXECUTIVE OFFICERS

Mario Schlosser
Chief Executive Officer

Brian West
Chief Financial Officer

Alan Warren
Chief Technology Officer

Joel Klein
*Chief Policy and
Strategy Officer*

Deena Gianoncelli
Chief People Officer

John Loser
Chief Risk Officer

PRIMARY CONTACTS

Maya Prokupets
Government Relations
maya@hioscar.com

Anne Espiritu
Public Affairs
VP of Communications
anne@hioscar.com

Oscar Health Plan of California

3535 Hayden Ave. Suite 230 • Culver City, CA 90232

Ph: (855) OSCAR-55 • Fax: (844) 965-9053 • www.hioscar.com

PLAN ORGANIZATION

Parent Company/Affiliate Oscar Insurance Corp.
Recent mergers or acquisitions within California None
Year founded 2015
Year licensed 2016
Tax status For Profit

PLAN PRODUCTS

PRODUCTS CURRENTLY OFFERED

Covered California (Individual Market) EPO
Individual market EPO
Small group (2–50 employees) None
Large group (50+ employees) None
Medicare Advantage None
Medi-Cal Managed Care None
Medigap (Supplemental Insurance) None
Special Needs Plans (SNPs) None
Medicare Part D stand-alone None
Access for Infants and Mothers None
Healthy Kids None
Major Risk Medical Insurance/GIP None
Other None

ANCILLARY PRODUCTS

Vision None
Chiropractic None
Dental None
Prescription Drugs None
Long Term Health Care None
Life Insurance None
Accidental Death & Dismemberment None
Acupuncture None
Substance Abuse None
Massage Therapy None
Durable Medical Equipment None
Rehabilitation None
Workers' Compensation None
Other (please specify) None

**CALIFORNIA
OFFICE LOCATIONS**

Headquarters
4665 Business Center Drive
Fairfield, CA 94534

Santa Rosa Office
495 Tesconi Circle
Santa Rosa, CA 95401

Redding Office
3688 Avtech Parkway
Redding, CA 96002

Eureka Office
1036 5th Street, Suite E
Eureka, CA 95501

EXECUTIVE OFFICERS

Elizabeth Gibboney
*Executive Director/
Chief Executive Officer*

Sonja Bjork
Chief Operating Officer

Patti McFarland
Chief Financial Officer

Robert Moore, MD, MPH
Chief Medical Officer

Kirt Kemp
Chief Information Officer

Margaret Kisliuk
*Executive Director,
Northern Region*

Robert Layne
*Director of Government
and Public Affairs*

Amy Turnipseed
*Director of Policy and
Program Development*

PRIMARY CONTACT

Robert Layne
*Director of Government
and Public Affairs
(707) 420-7690*

Partnership HealthPlan of California

4665 Business Center Drive • Fairfield, CA 94534
Ph: (707) 863-4100 • Fax: (707) 863-4117 • www.partnershiphp.org

PLAN ORGANIZATION

Parent Company/Affiliate None
Recent mergers or acquisitions within California None
Year founded 1994
Year licensed 2005
Tax status Non profit
Number of employees 689
Health Plan Enrollment 560,000

PLAN-PROVIDER ARRANGEMENTS

Model types (ranked in descending order) Direct Contracting with Physicians,
Network of Medical Groups and IPAs
Number of medical groups/IPAs 0 owned, 6 contracted
Number of hospitals 0 owned, 63 contracted
Number of physicians 0 owned, 8,406 contracted
Number of other licensed clinicians 0 owned, 1,013 contracted
Number of provider offices 0 owned, 1,169 contracted

COMPENSATION METHODS

Physicians—primary care (ranked by method) Individual and Group Capitation, Fee-For-Service
Physicians—specialty (ranked by method) Fee-For-Service, Individual Capitation,
Group Capitation
Hospitals (ranked by payment type) Per Diem, Capitation, Diagnosis-Related Group

PLAN PRODUCTS

PRODUCTS CURRENTLY OFFERED

Individual market None
Small group (2–50 employees) None
Large group (50+ employees) None
Medicare Advantage None
Medigap (Supplemental Insurance) None
Special Needs Plans (SNPs) None
Medicare Part D stand-alone None
Access for Infants and Mothers None
Medi-Cal Managed Care HMO
Healthy Kids HMO
Major Risk Medical Insurance/GIP None
Other None

ANCILLARY PRODUCTS

Vision HMO
Chiropractic HMO
Dental HMO
Prescription Drugs HMO
Long Term Health Care HMO
Life Insurance None
Accidental Death & Dismemberment None
Acupuncture HMO
Substance Abuse HMO
Massage Therapy HMO
Durable Medical Equipment HMO
Rehabilitation HMO
Workers' Compensation None
Other None

EXECUTIVE OFFICER

John F. Grgurina, Jr.
CEO

EXECUTIVE STAFF

Sunny Cooper
CIO

John Gregoire
CFO

Deena Louie
Chief Operations Officer

Nina Maruyama
Officer, Regulatory
Affairs and Compliance
(includes Community
Relations and Marketing)

James Glauber, MD, MPH
Chief Medical Officer

Sumi Sousa
Officer, Policy Development
and Coverage Programs

PRIMARY CONTACTS

Sumi Sousa
Officer, Policy Development
and Coverage Programs
(415) 615-5121

Nina Maruyama
Officer, Regulatory
Affairs and Compliance
(includes Community
Relations and Marketing)
(415) 615-4217

San Francisco Health Plan (San Francisco Health Authority)

50 Beale Street • San Francisco, CA 94105

Ph: (415) 547-7818 • Fax: (415) 615-6435 • www.sfhp.org

PLAN ORGANIZATION

Parent Company/Affiliate None
Recent mergers or acquisitions within California None
Year founded 1997
Year licensed 1996
Tax status Non profit/Public Agency
Number of employees 300 full time
Health Plan Enrollment 149,060

PLAN-PROVIDER ARRANGEMENTS

Model types (ranked in descending order) Network of Medical Groups and IPAs,
Staff (Kaiser)
Number of medical groups/IPAs 0 owned, 7 contracted
Number of hospitals 0 owned, 8 contracted
Number of physicians 0 owned, 2,936 contracted (PCP & Specialists)
Number of other licensed clinicians 0 owned, 381 contracted (Mid-Level providers)
Number of provider offices 0 owned, 159 contracted (PCP sites)

COMPENSATION METHODS

Physicians—primary care (ranked by method) Group Capitation, Fee-For-Service
Physicians—specialty (ranked by method) Group Capitation, Fee-For-Service
Hospitals (ranked by payment type) Capitation, Fee-For-Service

PLAN PRODUCTS**PRODUCTS CURRENTLY OFFERED**

Individual market None
Small group (2–50 employees) None
Large group (50+ employees) None
Medicare Advantage None
Medi-Cal Managed Care HMO
Medigap (Supplemental Insurance) None
Special Needs Plans (SNPs) None
Medicare Part D stand-alone None
Access for Infants and Mothers None
Healthy Kids HMO
Major Risk Medical Insurance/GIP None
Other Healthy Workers: HMO

ANCILLARY PRODUCTS

Vision HMO
Chiropractic None
Dental HMO (Healthy Kids)
Prescription Drugs HMO
Long Term Health Care None
Life Insurance None
Accidental Death & Dismemberment None
Acupuncture None
Substance Abuse Non-Medi-Cal
Massage Therapy None
Durable Medical Equipment HMO
Rehabilitation HMO
Workers' Compensation None
Other None

Santa Clara Family Health Plan (Santa Clara County Health Authority)

210 E. Hacienda Avenue • Campbell, CA 95008
Ph: (408) 376-2000 • Fax: (408) 376-2191 • www.scfhp.com

EXECUTIVE OFFICERS

Christine Tomcala
Chief Executive Officer

Dave Cameron
Chief Financial Officer

Jeff Robertson, MD
Chief Medical Officer

Jonathan Tamayo
Chief Information Officer

Christine Turner
*Interim Chief
Operating Officer*

EXECUTIVE STAFF

Sharon Valdez
VP of Human Resources

Beth Paige
*Compliance and
Privacy Officer*

Neal Jarecki
Controller

Lily Boris, MD
Medical Director

Sandra Carlson
Director of Health Services

Johanna Liu
*Director of Quality
and Pharmacy*

Lori Anderson
*Director of Long Term
Services and Supports*

Jennifer Clements
*Director of Provider
Network Management*

Laura Watkins
*Director of Marketing
and Communications*

PRIMARY CONTACT

Christine Tomcala
Public Affairs
(408) 376-2000

PLAN ORGANIZATION

Parent Company/Affiliate	None
Recent mergers or acquisitions within California	None
Year founded	1995
Year licensed	1997
Tax status	Non profit
Number of employees	178
Health Plan Enrollment	280,380

PLAN-PROVIDER ARRANGEMENTS

Model types (ranked in descending order)	Network of Medical Groups and IPAs, Direct Contracting with Physicians
Number of medical groups/IPAs	0 owned, 8 contracted
Number of hospitals	0 owned, 8 contracted
Number of physicians	0 owned, 4,625 contracted

COMPENSATION METHODS

Physicians—primary care (ranked by method)	Medical Group Capitation, PCP Capitated, Fee-For-Service including risk sharing
Physicians—specialty (ranked by method)	Fee-For-Service, Medical Group Capitation
Hospitals (ranked by payment type)	Per Diem, Diagnosis-Related Group

PLAN PRODUCTS

PRODUCTS CURRENTLY OFFERED

Individual market	None
Small group (2–50 employees)	None
Large group (50+ employees)	None
Medicare Advantage	None
Medi-Cal Managed Care	HMO
Medigap (Supplemental Insurance)	None
Special Needs Plans (SNPs)	None
Medicare Part D stand-alone	None
Access for Infants and Mothers	None
Healthy Kids	HMO
Major Risk Medical Insurance/GIP	None
Other	HMO, (Cal MediConnect)

ANCILLARY PRODUCTS

Vision	None
Chiropractic	None
Dental	None
Prescription Drugs	None
Long Term Health Care	None
Life Insurance	None
Accidental Death & Dismemberment	None
Acupuncture	None
Substance Abuse	None
Massage Therapy	None
Durable Medical Equipment	None
Rehabilitation	None
Workers' Compensation	None
Other	None

EXECUTIVE OFFICERS

Chris Wing
Chief Executive Officer

Bill Roth
President

Nancy Monk
Chief Administrative Officer

Janet Kornblatt
General Counsel

Vinod Mohan
Chief Financial Officer

Cathy Batteer
*Senior Vice President
and General Manager,
All SCAN Markets*

EXECUTIVE STAFF

Peter Begans
*Senior Vice President,
Public, Government and
Community Affairs*

Eve Gelb
*Senior Vice President,
Health Care Services*

David Milligan
*Senior Vice President,
National Sales*

Sherry Stanislaw
*Senior Vice President
and General Manager,
Southern California*

Riaz Ali
Chief Marketing Executive

Romilla Batra, M.D.
Chief Medical Executive

Josh Goode
Chief Technology Executive

Andrew Whitelock
*Chief Risk Executive and
Compliance Officer*

Sharon Jhawar
*Corporate Vice President,
Pharmacy*

PRIMARY CONTACT

Peter Begans
*Government Relations
(202) 756-2279*

SCAN Health Plan®

3800 Kilroy Airport Way, Suite 100 • Long Beach, CA 90806
Ph: (562) 989-5100 • Fax: (562) 989-5200 • www.scanhealthplan.com

PLAN ORGANIZATION

Parent Company/Affiliate SCAN Group
Recent mergers or acquisitions within California None
Year founded 1977
Year licensed 1985
Tax status Non profit
Number of employees 979 full time, 79 part time
Health Plan Enrollment 170,253

PLAN-PROVIDER ARRANGEMENTS

Model types (ranked in descending order) Network of Medical Groups and IPAs
Number of medical groups/IPAs 0 owned, 71 contracted
Number of hospitals 0 owned, 118 contracted

COMPENSATION METHODS

Physicians—primary care (ranked by method) Group Capitation
Physicians—specialty (ranked by method) Group Capitation
Hospitals (ranked by payment type) Per Diem, Diagnosis-Related Group, Capitation

PLAN PRODUCTS

PRODUCTS CURRENTLY OFFERED

Individual market None
Small group (2–50 employees) None
Large group (50+ employees) None
Medicare Advantage HMO
Medigap (Supplemental Insurance) None
Special Needs Plans (SNPs) HMO
Medicare Part D stand-alone None
Access for Infants and Mothers None
Medi-Cal Managed Care HMO
Healthy Kids None
Major Risk Medical Insurance/GIP None
Other None

ANCILLARY PRODUCTS

Vision HMO
Chiropractic HMO
Dental HMO
Prescription Drugs HMO
Long Term Health Care HMO
Life Insurance None
Accidental Death & Dismemberment None
Acupuncture None
Substance Abuse HMO
Massage Therapy None
Durable Medical Equipment HMO
Rehabilitation None
Workers' Compensation None
Other None

EXECUTIVE OFFICERS

Wendy Dorchester
CEO

Robert Castillo
CMO

PRIMARY CONTACTS

Peter Mackler
Government Relations
(714) 377-2946

Rhoda Weiss
Public Affairs
(562) 933-1622

Seaside Health Plan

2840 Long Beach Blvd., Suite 120 • Long Beach, CA 90806
Ph: (562) 933-0950 • Fax: (562) 424-1486 • www.SeasideHealthPlan.org

PLAN ORGANIZATION

Parent Company/Affiliate MemorialCare Health System
Year founded 2013
Year licensed 2013
Tax Status Non-Profit
Number of employees 40
Health Plan Enrollment 39,000, CA HMO

PLAN-PROVIDER ARRANGEMENTS

Model types (ranked in descending order) Network of Medical Group,
IPA's, and Direct Contracting
Number of Medical Groups/IPAs 0 owned, 1 contracted
Number of hospitals 0 owned, 7 contracted
Number of physicians 0 owned, 326 PCP + 1310 SPC contracted
Number of other licensed clinicians 0 owned, 0 contracted
Number of provider offices 0 owned, 0 contracted

COMPENSATION METHODS

Physicians – primary care (ranked by method) Group Capitation, Individual Capitation, FFS
Physicians – specialty (ranked by method) Group Capitation, Individual Capitation, FFS
Hospitals (ranked by payment type) Capitation, Case Rate, DRG, Per Diem

PLAN PRODUCTS

PRODUCTS CURRENTLY OFFERED

Individual market Plan to Plan
Small group (2 – 50 employees) Plan to Plan
Large group (50+ employees) Plan to Plan, Direct 100+ Employees
Medicare Advantage Plan to Plan
Medi-Cal Managed Care Plan to Plan
Medigap (Supplemental Insurance) None
Special Needs Plans (SNPs) Plan to Plan
Medicare Part D stand-alone None
Access for Infants and Mothers None
Healthy Kids None
Major Risk Medical Insurance/GIP None
Other None

ANCILLARY PRODUCTS

Vision None
Chiropractic Large Group
Dental None
Prescription Drugs Large Group
Long Term Health Care None
Life Insurance None
Accidental Death & Dismemberment None
Acupuncture Large Group
Substance Abuse None
Massage Therapy None
Durable Medical Equipment None
Rehabilitation None
Workers' Compensation None
Other (please specify) None

EXECUTIVE OFFICERS

Melissa Hayden Cook
*President and Chief
Executive Officer*

Rita Datko
Chief Financial Officer

Leslie Pels-Beck
Chief Operations Officer

Cary B. Shames, DO
Chief Medical Officer

Michael Byrd
*Chief Business
Development Officer*

PRIMARY CONTACTS

Stacy Baker
Government Relations
(858) 499-8237

Tom Carroll
Public Affairs
(858) 499-8327

Sharp Health Plan

8520 Tech Way, Suite 200 • San Diego, CA 92123

Ph: (858) 499-8377 • Fax: (858) 499-8244 • www.sharphealthplan.com

PLAN ORGANIZATION

Parent Company/Affiliate Sharp HealthCare
Recent mergers or acquisitions within California None
Year founded 1992
Year licensed 1992
Tax status Non profit
Number of employees 205 FTE
Health Plan Enrollment 129,679

PLAN-PROVIDER ARRANGEMENTS

Model types (ranked in descending order) Network of Medical Groups, IPAs,
Individual Practices, Physician Practices
Number of medical groups/IPAs 0 owned, 14 contracted
Number of hospitals 0 owned, 14 contracted
Physician practices (including specialists) 0 owned, 2,314 contracted
Number of provider offices 0 owned, 1,033 contracted

COMPENSATION METHODS

Physicians—primary care (ranked by method) Group Capitation, Fee-For-Service
Physicians—specialty (ranked by method) Group Capitation, Fee-For-Service
Hospitals (ranked by payment type) Capitation, Discounted Charges, Per Diem

PLAN PRODUCTS

PRODUCTS CURRENTLY OFFERED

Individual market HMO
Covered California (SHOP) HSA HMO, HMO-1, HMO-2
Small group (1–100 employees) HMO
Large group (101+ employees) HMO, POS
Medicare Advantage HMO
Medigap (Supplemental Insurance) None
Special Needs Plans (SNPs) None
Medicare Part D stand-alone None
Access for Infants and Mothers None
Medi-Cal Managed Care None
Healthy Kids None
Major Risk Medical Insurance/GIP None
Other None

ANCILLARY PRODUCTS

Vision HMO
Chiropractic HMO/Other
Dental HMO/PPO
Prescription Drugs HMO
Long Term Health Care None
Life Insurance None
Accidental Death & Dismemberment None
Acupuncture HMO/Other
Substance Abuse HMO
Massage Therapy Other
Durable Medical Equipment HMO
Rehabilitation HMO
Workers' Compensation None
Other None

EXECUTIVE OFFICERS

Phil Jackson
Chief Executive Officer

Shelly Boehm
*Interim Chief
Financial Officer*

Jennifer Schirmer
VP, Operations

Monica Majors
*VP, Strategic Sales
& Marketing*

Robert Carnaroli
VP, Sales

Jennifer Nuovo, MD
Chief Medical Officer

EXECUTIVE STAFF

Michael Poole
Compliance Officer

Gretchen Lachance
Assistant General Counsel

PRIMARY CONTACT

Sy Neilsen
*Communications
(916) 292-0666*

Sutter Health Plus

2480 Natomas Park Dr., Suite 150 • Sacramento, CA 95833
Ph: (855) 325-5200 • Fax: (916) 614-2487 • www.sutterhealthplus.org

PLAN ORGANIZATION

Parent Company/Affiliate Sutter Health
Recent mergers or acquisitions within California N/A
Year founded 2012
Year licensed 2013
Tax status Non profit
Number of employees 97 fulltime FTE
Health Plan Enrollment 47,293

PLAN-PROVIDER ARRANGEMENTS

Model types (ranked in descending order) Network of Medical Groups and IPAs
Number of Medical Groups/IPAs 8 contracted
Number of hospitals 25 contracted
Number of physicians 5,000 contracted
Number of other licensed clinicians Not tracked – N/A
Number of provider offices Not tracked – N/A

COMPENSATION METHODS

Physicians – primary care (ranked by method) Capitation
Physicians – specialty (ranked by method) Capitation
Hospitals (ranked by payment type) Capitation; Per diem

PLAN PRODUCTS

PRODUCTS CURRENTLY OFFERED

Individual market HMO
Small group (1–100 employees) HMO
Large group (101+ employees) HMO
Medicare Advantage N/A
Medi-Cal Managed Care N/A
Medigap (Supplemental Insurance) N/A
Special Needs Plans (SNPs) N/A
Medicare Part D stand-alone N/A
Access for Infants and Mothers N/A
Healthy Kids N/A
Major Risk Medical Insurance/GIP N/A
Other N/A

ANCILLARY PRODUCTS

Vision HMO
Chiropractic HMO
Dental HMO
Prescription Drugs HMO
Long Term Health Care N/A
Life Insurance N/A
Accidental Death & Dismemberment N/A
Acupuncture HMO
Substance Abuse HMO
Durable Medical Equipment HMO
Rehabilitation HMO
Workers' Compensation N/A
Other (please specify) N/A

EXECUTIVE OFFICERS

Robert C. Falkenberg
President and CEO

John Wolterbeek
Chief Financial Officer

Jeffrey Mason, MD
Medical Director

Claire Hannan
VP Operations

Kimberley Dunn
*Senior Associate
General Counsel*

Leslie Carter
Chief Operating Officer

PRIMARY CONTACT

Kimberley Dunn
(916) 451-1592

UnitedHealthcare of California

5701 Katella Avenue • Cypress, CA 90630

Ph: (714) 952-1121 • Fax: (866) 383-0428 • www.myuhc.com

PLAN ORGANIZATION

Parent Company/Affiliate UnitedHealth Group
Ultimate Parent Company UnitedHealth Group

Health plan products and services are offered by UnitedHealthcare of California, Indemnity insurance products (including PPO, medical, dental, life/AD&D and short term disability products) are underwritten by UnitedHealthcare Insurance Company.

Year founded 1975
Year licensed 1978
Tax status For profit
Number of employees 5,000+ UHG employees
Health Plan Enrollment 820,944

PLAN-PROVIDER ARRANGEMENTS

Model types (ranked in descending order) Network of Medical Groups and IPAs
Number of medical groups/IPAs 0 owned, 303 contracted
Number of hospitals 0 owned, 440 contracted
Number of physicians 57,614 contracted
Number of provider offices 42,274 contracted

COMPENSATION METHODS

Physicians – primary care (ranked by method) Depends on IPA/PMG subcontracts
Physicians – specialty (ranked by method) Depends on IPA/PMG subcontracts
Hospitals (ranked by payment type) Capitation, Per Diem

PLAN PRODUCTS

PRODUCTS CURRENTLY OFFERED

Small group (1–99 employees) HMO
Large group (100+ employees) HMO
Medicare Advantage HMO
Medi-Cal Managed Care None
Medigap (Supplemental Insurance) by affiliate
Special Needs Plans (SNPs) None
Medicare Part D stand-alone by affiliate
Access for Infants and Mothers None
Healthy Kids None
Major Risk Medical Insurance/GIP None
Other None

ANCILLARY PRODUCTS

Vision PPO
Chiropractic HMO, PPO
Dental HMO, PPO
Prescription Drugs HMO, PPO
Long Term Health Care None
Life Insurance Other
Accidental Death & Dismemberment Other
Acupuncture HMO, PPO
Substance Abuse HMO, PPO
Massage Therapy None
Durable Medical Equipment HMO, PPO
Rehabilitation None
Workers' Compensation None
Other Infertility: HMO, PPO

**EXECUTIVE OFFICERS
(ACTING)**

Bruce Butler
CEO

Mitch Hall
COO

EXECUTIVE STAFF

Dolly Goel, MD
Medical Director

PRIMARY CONTACTS

Georgette Greene
Regulatory Affairs
(408) 885-5606

Joy Alexiou
Public Affairs
(408) 885-4164

Valley Health Plan (Santa Clara County)

2480 North 1st Street, Suite 200 • San Jose, CA 95131

Ph: (408) 885-4080 • Fax: (408) 885-5921 • www.valleyhealthplan.org

PLAN ORGANIZATION

Parent Company/Affiliate	Santa Clara County
Recent mergers or acquisitions within California	N/A
Year founded	1985
Year licensed	1985
Tax status	Non profit
Number of employees	154 FTE
Health Plan Enrollment	167,467

PLAN-PROVIDER ARRANGEMENTS

Model types (ranked in descending order)	Two-Plan Model
Number of medical groups/IPAs	5 contracted
Number of hospitals	5 contracted
Number of physicians	1,009 staff/contracted
Number of other licensed clinicians	400 contracted

COMPENSATION METHOD

Physicians—primary care (ranked by method).	Fee-For-Service, Capitation, Salary
Physicians—specialty (ranked by method).	Fee-For-Service, Salary
Hospitals (ranked by payment type)	Capitation, Per Diem, Percentage of Billed

PLAN PRODUCTS

PRODUCTS CURRENTLY OFFERED

Covered California (Individual Market)	HMO
Individual market	HMO
Small group (2–50 employees)	HMO
Large group (50+ employees)	HMO
Medicare Advantage	None
Medigap (Supplemental Insurance)	None
Special Needs Plans (SNPs)	None
Medicare Part D stand-alone	None
Access for Infants and Mothers	None
Medi-Cal Managed Care	HMO
Healthy Kids	HMO
Major Risk Medical Insurance/GIP	None
Other	COBRA: HMO

ANCILLARY PRODUCTS

Vision	None
Chiropractic	HMO
Dental	HMO
Prescription Drugs	HMO
Long Term Health Care	None
Life Insurance	None
Accidental Death & Dismemberment	None
Acupuncture	HMO
Substance Abuse	HMO
Massage Therapy	None
Durable Medical Equipment	HMO
Rehabilitation	HMO
Workers' Compensation	None
Other	None

EXECUTIVE OFFICERS

**County Board
of Supervisors**

EXECUTIVE STAFF

Johnson K. Gill
*Health Care
Agency Director*

Narcisa Egan
*Assistant Chief
Financial Officer*

Dr. Catherine Rajala Sanders
Chief Medical Officer

PRIMARY CONTACT

Dee Pupa
Plan Administrator
(805) 981-5006

Ventura County Health Care Plan

2220 E. Gonzales Rd., Suite 210B • Oxnard, CA 93036

Ph: (805) 981-5050 • Fax: (805) 981-5026 • www.vchealthcareplan.org

PLAN ORGANIZATION

Parent Company/Affiliate County of Ventura
Recent mergers or acquisitions within California None
Year founded 1993
Year licensed 1996
Tax status Non profit
Number of employees 40
Health Plan Enrollment 16,100

PLAN-PROVIDER ARRANGEMENTS

Model types (ranked in descending order) Direct Contract
Number of medical groups/IPAs None
Number of hospitals 2 County operated, 5 contracted
Number of physicians 0 owned, 441 contracted
Number of other (NPs/PAs) 0 owned, 78 contracted
Number of provider offices (all specialties) 0 owned, 162 contracted, 65 PCPs

COMPENSATION METHODS

Physicians – primary care (ranked by method) FFS
Physicians – specialty (ranked by method) FFS
Hospitals (ranked by payment type) Per Diem, Case Rates, % Charges

PLAN PRODUCTS

PRODUCTS CURRENTLY OFFERED	HMO
Individual market	No
Small group (2–50 employees)	Yes
Large group (50+ employees)	Yes
Medicare Advantage	No
Medi-Cal Managed Care	No
Medigap (Supplemental Insurance)	No
Special Needs Plans (SNPs)	No
Medicare Part D stand-alone	No
Access for Infants and Mothers	Yes
Healthy Kids	No
Major Risk Medical Insurance/GIP	No
Other	No

ANCILLARY PRODUCTS	HMO
Vision	No
Chiropractic	Yes
Dental	No
Prescription Drugs	Yes
Long Term Health Care	No
Life Insurance	No
Accidental Death & Dismemberment	No
Acupuncture	Yes
Substance Abuse	Yes
Massage Therapy	No
Durable Medical Equipment	Yes
Rehabilitation	Yes
Workers' Compensation	No
Other (please specify)	No

EXECUTIVE OFFICERS

Garry Maisel
President and CEO

Rita Ruecker
Chief Financial Officer

EXECUTIVE STAFF

Donald Hufford, M.D.
Chief Medical Officer

Glenn Hamburg
*Chief Client
Services Officer*

Bill Figenshu
Chief Sales Officer

Rebecca Downing
Chief Legal Officer

Rick Heron
*Chief Marketing and
Brand Officer*

Ali Darugar
Chief Information Officer

PRIMARY CONTACTS

Rebecca Downing
Government Relations
(916) 563-3183

Rick Heron
Public Affairs
(916) 614-6009

Western Health Advantage

2349 Gateway Oaks Drive, Suite 100 • Sacramento, CA 95833
Ph: (916) 563-3180 • Fax: (916) 563-3182 • www.westernhealth.com

PLAN ORGANIZATION

Parent Company/Affiliate	None
Subsidiaries	None
Recent mergers or acquisitions within California	None
Year founded	1995
Year licensed	1997
Tax status	Tax-Exempt
Number of employees	197 full time, 10 part time
Health Plan Enrollment	126,319

PLAN-PROVIDER ARRANGEMENTS

Model types (ranked in descending order)	Network of Medical Groups and IPAs, Direct Contracting with Physicians
Number of medical groups	0 owned, 4 contracted
Number of IPAs	0 owned, 2 contracted
Number of hospitals	0 owned, 14 contracted
Number of physicians	0 owned, 2,924 contracted

COMPENSATION METHODS

Physicians—primary care (ranked by method)	Group Capitation
Physicians—specialty (ranked by method)	Group Capitation
Hospitals (ranked by payment type)	Capitation, Discount Charges

PLAN PRODUCTS

PRODUCTS CURRENTLY OFFERED

Covered California (Individual Market)	HMO, HSA HMO
Individual market	HMO, HSA HMO
Covered California (SHOP)	HMO, HSA HMO
Small group (2–100 employees)	HMO, HSA HMO
Large group (100+ employees)	HMO, HSA HMO, PPO
Medicare Advantage	None
Medi-Cal Managed Care	None
Medigap (Supplemental Insurance)	None
Special Needs Plans (SNPs)	None
Medicare Part D stand-alone	None
Access for Infants and Mothers	None
Healthy Kids	None
Major Risk Medical Insurance/GIP	None
Other	None

ANCILLARY PRODUCTS

Vision	HMO/PPO
Chiropractic	HMO
Dental	HMO/PPO
Prescription Drugs	HMO
Long Term Health Care	None
Life Insurance	None
Accidental Death & Dismemberment	None
Acupuncture	HMO
Substance Abuse	HMO
Massage Therapy	None
Durable Medical Equipment	HMO
Rehabilitation	HMO
Workers' Compensation	None
Other	Health coaching International travel assistance services



HYATT REGENCY HUNTINGTON BEACH
October 9-11 | 2017
CAHP ANNUAL CONFERENCE



SAVE THE DATE

All Your Members Deserve the Best Care

Delivering on the promise of population health management requires synergy on all levels. When people, systems and data work in harmony, a real, positive impact can be made on the health of individuals and populations.



Casenet clients experience:

- 100% on-time, on-budget implementations
- 93% customer satisfaction
- Proven record of partnership
- Configurable and efficient workflows
- Demonstrated ROI

Contact us to learn more about Casenet's population health management platform at:
www.casenetllc.com or
info@casenetllc.com

casenet[®]

Integrity • Accountability • Collaboration • Trust • Respect



Gold Coast Health Plan's member-first focus centers on the delivery of exceptional service to our beneficiaries by enhancing the quality of health care, providing greater access and improving member choice.

GCHP takes its role in the community seriously and makes every effort to provide the highest quality care and choice for our members. Our call center representatives are skilled at helping members learn more about their coverage and how to get the services they need.



To learn more about GCHP give us a call at 1.888.301.1228, or visit us on the web at:
www.goldcoasthealthplan.org



**Gold Coast
Health PlanSM**
A Public Entity

711 East Daily Drive, Suite 106, Camarillo, CA 93010-6082

And remember:

Gold Coast Health Plan is more than a managed health care plan; we're your partner in maintaining good health.

Complex populations don't need to be so complex



Magellan Healthcare is changing the way health plans manage special populations and care

Healthcare rarely works in a 'one size fits all' fashion. Managing care for different populations will always present problems to overcome. For health plans that can mean increased costs and challenges. For individual members, it can mean missing out on the care they desperately need. At Magellan, it is our mission to help individuals live their lives to the highest potential. We have nearly 50 years of experience managing complex populations and behavioral health concerns.

Now, using innovative technology and superior clinical care models, we are introducing a new approach to care. Welcome to the *next generation of behavioral healthcare*.



Innovation in Risk Management – it's in our DNA

The Risk Strategies' National Health Care Practice incorporates the experience and expertise of Dubraski & Associates, a national health care specialty broker, and Re-Solutions, one of the largest A&H reinsurance intermediaries in the United States.

By bringing together one of the largest teams of dedicated health care insurance and reinsurance professionals operating across the country, Risk Strategies is able to bring its health care clients a focused, integrated and responsive liability and risk management service that is best in class.

- Health Plan Reinsurance
- Managed Care E&O/D&O
- Property & Casualty
- Bundled Payment Stop Loss
- Cyber Insurance
- Employee Benefits
- Generating Revenue with Employer Stop Loss

Contact us to learn more about our services.

– **Re-Solutions**

Chuck Newton
T: 804.647.8360
E: cnewton@re-solutions.net

Matt Smith
T: 206.359.0465
E: msmith@re-solutions.net

– **Dubraski & Associates**

Cathy Sussman
T: 612.396.7241
E: csussman@dubraski.com

Dave Kalb
T: 651.260.0989
E: dkalb@dubraski.com

Dubraski & Associates
INSURANCE SERVICES
A RISK STRATEGIES COMPANY

www.dubraski.com

Re-Solutions
A RISK STRATEGIES COMPANY

www.re-solutions.net

RISK STRATEGIES
C O M P A N Y

www.Risk-Strategies.com/healthcare

MANAGING OUTPATIENT LABORATORY COST IS MUCH MORE THAN JUST MANAGING GENETIC TESTING

Genetic testing is only 3 - 5% of outpatient laboratory costs. You can manage genetic testing without contracting with expensive prior authorization programs that unnecessarily burden members and physicians and result in a net minimal savings.

The ***Kentmere Laboratory Benefit Management Program*** saves health plans \$2-4+ PMPM by uniquely managing all outpatient laboratory testing, including genetics, through Kentmere's proprietary analytics and medical, reimbursement, and contracting programs while not disrupting your current members, physicians and network.

Only Kentmere has provided a full laboratory benefit management program since 2000. Kentmere has experience with local, regional and national health plans from 16,000 to over 26 million members.

Kentmere has unmatched references from clients who have all saved 15 - 25% of their outpatient laboratory costs with ROIs as high as 60+ to 1.

Kentmere is not a laboratory, does not work for the laboratory industry, and does not benefit from any laboratories in network through contractor relationships. Kentmere is 100% independent and only works for health plans. Kentmere is not venture capital owned, owned by a health plan, or an imaging or ancillary services company trying to learn laboratory benefit management at your expense.

KENTMERE
HEALTHCARE CONSULTING
C O R P O R A T I O N

VALIDATED RESULTS NOT UNSUBSTANTIATED PROMISES

15+ YEAR PROVEN TRACK RECORD OF ACTUAL COST SAVINGS

inquiry@kentmerehealth.com

302-478-7600



BRIDGING THE GAP BETWEEN EFFICIENCY & REGULATIONS

Health Solutions Plus (HSP) understands the unique set of challenges Medi-Cal programs now face in the wake of the new Medicaid Managed Care rules.

You need an Enterprise-Wide Core Administration Software Solution that ensures Medi-Cal programs connect the new standards with optimal operational automation, effective care coordination and controlled financial performance for Medi-Cal and Dual Eligible populations.



Health Solutions Plus
Unifying the Business of Healthcare

HSPWEB.COM | 800.244.8718



ProCare Rx

Your Simple, Turn-Key PBM Solution



COMPREHENSIVE REPORTING

Daily, Weekly, Monthly &
Adhoc Reports



Always Open
US-BASED
pharmacy help desk &
customer care centers



Fully Auditable
TRANSPARENT
PASS-THROUGH PRICING

PHARMACY CLAIMS PROCESSING SYSTEM

Internally Developed & Maintained

Friendly & Knowledgeable
CUSTOMER SERVICE
REPRESENTATIVES



800-377-1037

www.ProCareRx.com



Managing Your Pharmacy Benefit... One Prescription at a Time!

Your need: Cutting cost-per-claim. Our specialty: Helping you do that.



OpenConnect is a leading provider of software for robotic process automation (RPA), mainframe integration, and operational intelligence. Our unique expertise enables us to help healthcare payers cut cost-per-claim, and other operational costs, as no other vendor can.

Learn how our team, knowledge, and experience can help your company, too.

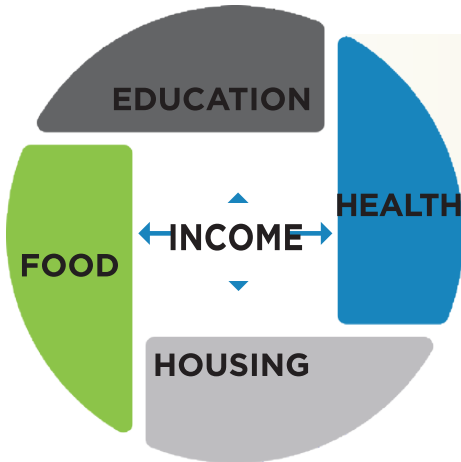
Contact sales@openconnect.com or 800.551.5881. Visit OpenConnect at openconnect.com.



Members benefit. Plans benefit. Advocacy works.



WE RECLASSIFY YOUR MEMBERS FROM ACA/TANF TO SPD



Members benefit.

The monthly income your members receive opens the doors to many important Social Determinants of Health.

Plans benefit.

Proper classification increases your plan's revenue and ensures the alignment of your resources, producing significant cost savings.

HEALTHIER MEMBERS

MORE CONVERSIONS

HIGHER PMPM

INCREASED REVENUE

SIGNIFICANT SAVINGS

THE HFI DIFFERENCE

PEOPLE

Social services professionals proficient in mental health and substance abuse comorbidities.

Culturally diverse staff that mirrors your plan's community and members.

Dedicated advocates who volunteer in community agencies.

TECHNOLOGY

Customizable to your plan's population and business objectives.

Adaptive technology becomes "smarter" over time creating more sustainable revenue.

A Big Data approach which creates highly accurate lists for outreach using all available data.

RESULTS

HFI has been proven to create significantly more Disability conversions for MCO Plans.

Higher PMPM resulting in Millions in new revenue.

"No Risk" business model.

Proper classification leads to new revenue and reduced costs, improving your bottom line.

For a customized proposal or to learn more about how HFI can generate millions of dollars in new revenue for your plan, please contact:

Rob Wilson, VP of Sales | rwilson@hfihealthcare.com | (401)741-8332



LexisNexis® VerifyHCP:

Meet Federal, State
and Plan level directory
requirements with ease.

VerifyHCP is the result of a LexisNexis and AMA collaboration. Together, we deliver the industry's most robust solution for provider directory accuracy.

Payers benefit from:

- A clinical portal for attestation with pre-fill functionality
- Multi-channel outreach, resulting in the industry's highest engagement rates to date
- Updates for facility providers
- A solution founded on the industry's most comprehensive and authoritative data sources

For more information,
call 866.396.7703 or visit
lexisnexis.com/risk/health-care



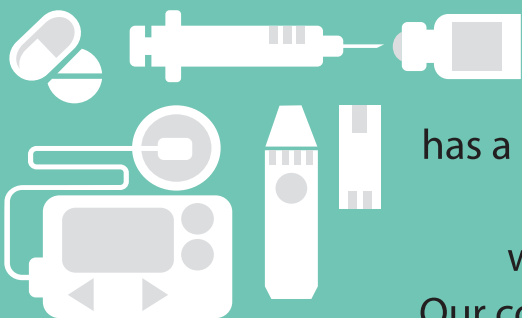
Health Care



LexisNexis, Lexis, Nexis and the Knowledge Burst logo are registered trademarks of Reed Elsevier Properties Inc., used under license. Other products and services may be trademarks or registered trademarks of their respective companies.

MINI PHARMACY

& MEDICAL SUPPLIES
Trusted, Caring, Always



Mini Pharmacy

has a long history in Diabetic Disease Management.
We will support your organization
with quality supplies and superior service.
Our cost saving patient health management system
provides the latest technology to assist patients,
health care professionals, and medical groups.

213-239-1266

WWW.MINIPHARMACY.COM

Supporting the Community for over 37 years



A Storm of Healthcare Fraud Lies on the Horizon

**PCG Software helps healthcare payers
navigate the stormy seas of fraudulent,
wasteful and abusive billing practices**

PCG
SOFTWARE

VIRTUAL EXAMINER®

- ▶ A recent study estimated that \$272 Billion of American healthcare dollars is lost due to fraud. So when the fog rolls in and the seas become rough, turn to PCG Software's flagship software solution, **Virtual Examiner®**.*

Virtual Examiner® is a comprehensive cost-containment solution that keeps watch over the internal claims process of payers to stop fraudulent, abusive and wasteful billing practices; safeguard premium healthcare dollars; and maximize financial recoveries.

Sailor take warning. Don't settle for software look-alikes that offer partial fixes. Contact PCG Software for your free claims analysis and learn how your organization can navigate to better savings with **Virtual Examiner®**.

*Estimate by Donald Berwick, a former head of the Centers for Medicare and Medicaid Services (CMS) and Andrew Hackbarth of the RAND Corporation

DRIVE FOR EXCELLENCE IN COMMUNITY HEALTH

Celebrating 20 years of innovative partnerships, programs, and services that share our commitment to health and health access throughout the Inland Empire.

“IEHP IS THE ONLY
HEALTH PLAN THAT
HAS GONE THE
EXTRA MILE”

- HERBERT KELLER
IEHP TEAM MEMBER



“I’M GIVING BETTER
CARE BECAUSE
OF IEHP”

- DR. ASHISH MALHOTRA
IEHP PROVIDER



“I WOULD NOT WORK
ANYWHERE ELSE”

- MICKY GIL
IEHP TEAM MEMBER

